

### 特点

- 输出无频闪, 符合ErP能效认证无频闪标准
- 待机功耗<0.5W, 符合ErP能效认证的待机功率要求
- 高功率因数, 高效率, 低谐波
- SELV和Class I 设计, 适用于灯具内使用
- 符合CE, ENEC, RCM, UKCA, CCC 等认证
- IP20 防护等级, 室内使用
- 常规使用下寿命可达100,000小时
- 5年保固

### 功能

- 支持独立式应急
- 多重保护  
(输出短路保护, 输出过载保护)

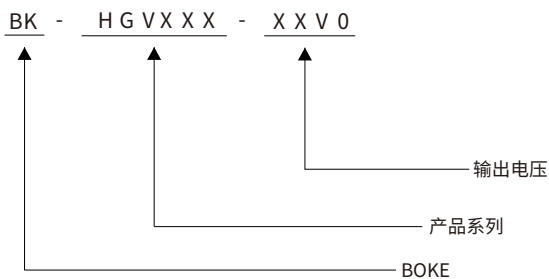
### 适用灯具

- 适用于恒压线条灯、恒压灯带、落地灯、三防灯, 支架灯等灯具

### 适用场合

- LED室内照明
- LED办公照明
- LED建筑照明
- LED商业照明

### HGV 系列型号编码规则



## 型号清单

| 型号             | 输入电压       | 输出功率       | 输出电压  | 输出电流 | 尺寸             | 认证                       |
|----------------|------------|------------|-------|------|----------------|--------------------------|
| BK-HGV022-12V0 | 200-240VAC | 21.6W MAX. | 12VDC | 1.8A | L195*W30*H21mm | CE, ENEC, RCM, UKCA, CCC |
| BK-HGV022-24V0 | 200-240VAC | 21.6W MAX. | 24VDC | 0.9A | L195*W30*H21mm | CE, ENEC, RCM, UKCA, CCC |
| BK-HGV048-12V0 | 200-240VAC | 48W MAX.   | 12VDC | 4.0A | L245*W30*H21mm | CE, ENEC, RCM, UKCA, CCC |
| BK-HGV048-24V0 | 200-240VAC | 48W MAX.   | 24VDC | 2.0A | L245*W30*H21mm | CE, ENEC, RCM, UKCA, CCC |
| BK-HGV048-48V0 | 200-240VAC | 48W MAX.   | 48VDC | 1.0A | L245*W30*H21mm | CE, ENEC, RCM, UKCA, CCC |
| BK-HGV060-12V0 | 200-240VAC | 60W MAX.   | 12VDC | 5.0A | L285*W30*H21mm | CE, ENEC, RCM, UKCA, CCC |
| BK-HGV060-24V0 | 200-240VAC | 60W MAX.   | 24VDC | 2.5A | L285*W30*H21mm | CE, ENEC, RCM, UKCA, CCC |
| BK-HGV070-48V0 | 200-240VAC | 72W MAX.   | 48VDC | 1.5A | L355*W30*H21mm | CE, ENEC, RCM, UKCA, CCC |
| BK-HGV072-12V0 | 200-240VAC | 72W MAX.   | 12VDC | 6.0A | L355*W30*H21mm | CE, ENEC, RCM, UKCA, CCC |
| BK-HGV072-24V0 | 200-240VAC | 72W MAX.   | 24VDC | 3.0A | L355*W30*H21mm | CE, ENEC, RCM, UKCA, CCC |
| BK-HGV100-24V0 | 200-240VAC | 96W MAX.   | 24VDC | 4.0A | L355*W30*H21mm | CE, ENEC, RCM, UKCA, CCC |
| BK-HGV100-48V0 | 200-240VAC | 96W MAX.   | 48VDC | 2.0A | L355*W30*H21mm | CE, ENEC, RCM, UKCA, CCC |
| BK-HGV150-24V0 | 200-240VAC | 144W MAX.  | 24VDC | 6.0A | L355*W36*H23mm | CE, ENEC, RCM, UKCA, CCC |
| BK-HGV150-48V0 | 200-240VAC | 144W MAX.  | 48VDC | 3.0A | L355*W36*H23mm | CE, ENEC, RCM, UKCA, CCC |

**技术参数**

| 产品型号             | BK-HGV022-12V0  | BK-HGV022-24V0 |  |
|------------------|---|----------------|--|
| <b>输出参数</b>      |   |                |  |
| 恒定方式             | 恒压  | 恒压             |  |
| 额定输出电流           | 1.8A  | 0.9A           |  |
| 额定输出电压           | 12VDC   | 24VDC          |  |
| 额定输出功率           | 21.6W Max   | 21.6W Max      |  |
| 输出恒压调节方式         | 固定输出  | 固定输出           |  |
| 电压低频纹波           | ±2%   | ±2%            |  |
| 电压精度             | ±5%   | ±5%            |  |
| 线性调整率            | ±1%   | ±1%            |  |
| 负载调整率            | ±5%   | ±5%            |  |
| 无频闪性能            | Pst LM=0.013, SVM=0.000,(以上参数以恒压灯带测试所得)                               |                |  |
| <b>输入参数</b>      |   |                |  |
| 额定工作电压范围         | 200-240VAC  |                |  |
| 极限电压范围           | 180-264VAC  |                |  |
| 抗短时高压能力          | <380 V AC   |                |  |
| 输入电流             | <0.3A (AC200V)  |                |  |
| 工作频率             | 50/60Hz   |                |  |
| 功率因数/相移因数        | PF: 0.65 ,DF: 0.98, 详见后面的电气曲线图  |                |  |
| 总谐波失真            | N/A   |                |  |
| 转换效率(Max)        | 89% , 详见后面的电气曲线图  |                |  |
| 开机浪涌电流           | 25.75A peak ,300us duration(50 % Ipeak), 详见后面的描述                      |                |  |
| 启动时间             | <0.5s(AC开灯),<0.5s(DC开灯),<0.3s(AC/DC切换),<0.5s(关灯)                      |                |  |
| 开关寿命             | > 50,000次   |                |  |
| 功率消耗             | 满载(Pin):21.3W, 空载(Pno): N/A, 待机(Psb) : N/A, 网络待机(Pnet) : N/A          |                |  |
| <b>安全</b>        |   |                |  |
| 耐压               | I/P-O/P(LED):3750VAC,I/P-FG:1750VAC,O/P-FG:500VAC                     |                |  |
| 雷击               | L-N:2KV,L-FG/N-FG:2KV   |                |  |
| 泄漏电流             | <0.7mA (230V AC & 满载)   |                |  |
| 绝缘阻抗             | I/P-O/P:100MΩ/500Vdc/25°C/70% RH                                      |                |  |
| <b>控制接口</b>      |   |                |  |
| DALI调光接口         | N/A   |                |  |
| pushDIM调光接口      | N/A   |                |  |
| 1-10V 3in1调光接口   | N/A   |                |  |
| 辅助供电             | N/A   |                |  |
| 调光范围             | N/A   |                |  |
| 调光驱动方式           | N/A   |                |  |
| <b>应急支持</b>      |   |                |  |
| 中央式应急照明系统        | 支持  |                |  |
| 独立式应急照明系统        | 支持  |                |  |
| <b>环境&amp;寿命</b> |   |                |  |
| 工作温度             | Ta=-20-60°C   |                |  |
| 外壳温度             | Tc=90°C   |                |  |
| 工作湿度             | 5-85% RH, 无冷凝   |                |  |
| 储存温度/湿度          | -40-80°C, 5-85% RH, 无冷凝   |                |  |
| IP等级             | IP20  |                |  |
| MTBF             | 500,000H,MIL-HDBK-217F(25°C)  |                |  |
| 使用寿命             | 常规使用条件下可达100,000小时, 详见后面的描述   |                |  |
| 耐振动              | 10 ~ 500Hz, 5G 12分钟/周期, X、Y、Z轴各72分钟                                   |                |  |
| 噪声               | <25dB(30cm, 正常工作)   |                |  |
| 环保               | RoHS  |                |  |
| <b>认证和标准</b>     |   |                |  |
| 认证               | CE, ENEC,RCM,UKCA,CCC   |                |  |
| 安全               | EN61347-1, EN61347-2-13, EN62384                                      |                |  |
| EMC              | EN55015, EN61000-3-2 , EN61000-3-3, EN61000-4-2,3,4,5,6,8,11, EN61547 |                |  |
| DALI-2           | N/A   |                |  |
| RF               | N/A   |                |  |

**备注**

1. 如未特别说明, 所有规格参数均在输入为230VAC、满载、25°C环境温度下进行量测。

**技术参数**

| 产品型号             | BK-HGV048-12V0   | BK-HGV048-24V0 | BK-HGV048-48V0 |
|------------------|--|----------------|----------------|
| <b>输出参数</b>      |  |                |                |
| 恒定方式             | 恒压   | 恒压             | 恒压             |
| 额定输出电流           | 4A   | 2A             | 1A             |
| 额定输出电压           | 12VDC  | 24VDC          | 48VDC          |
| 额定输出功率           | 48W Max  | 48W Max        | 48W Max        |
| 输出恒压调节方式         | 固定输出   | 固定输出           | 固定输出           |
| 电压低频纹波           | ±2%  | ±2%            | ±2%            |
| 电压精度             | ±5%  | ±5%            | ±5%            |
| 线性调整率            | ±1%  | ±1%            | ±1%            |
| 负载调整率            | ±5%  | ±5%            | ±5%            |
| 无频闪性能            | Pst LM=0.000, SVM=0.000,(以上参数以恒压灯带测试所得)                              |                |                |
| <b>输入参数</b>      |  |                |                |
| 额定工作电压范围         | 200-240VAC   |                |                |
| 极限电压范围           | 180-264VAC   |                |                |
| 抗短时高压能力          | <380 V AC  |                |                |
| 输入电流             | <0.4A (AC200V)   |                |                |
| 工作频率             | 50/60Hz  |                |                |
| 功率因数/相移因数        | PF: 0.99,DF: 0.99, 详见后面的电气曲线图  |                |                |
| 总谐波失真            | 5%, 详见后面的电气曲线图   |                |                |
| 转换效率(Max)        | 90%, 详见后面的电气曲线图  |                |                |
| 开机浪涌电流           | 27A peak ,262us duration(50% Ipeak), 详见后面的描述                         |                |                |
| 启动时间             | <0.7s(AC开灯),<0.7s(DC开灯),<0.3s(AC/DC切换),<0.5s(关灯)                     |                |                |
| 开关寿命             | > 50,000次  |                |                |
| 功率消耗             | 满载(Pin):53.3W, 空载(Pno): N/A, 待机(Psb): N/A, 网络待机(Pnet): N/A           |                |                |
| <b>安全</b>        |  |                |                |
| 耐压               | I/P-O/P(LED):3750VAC,I/P-FG:1750VAC,O/P-FG:500VAC                    |                |                |
| 雷击               | L-N:2KV,L-FG/N-FG:2KV  |                |                |
| 泄漏电流             | <0.7mA (230V AC & 满载)  |                |                |
| 绝缘阻抗             | I/P-O/P:100MΩ/500Vdc/25°C/70% RH                                     |                |                |
| <b>控制接口</b>      |  |                |                |
| DALI调光接口         | N/A  |                |                |
| pushDIM调光接口      | N/A  |                |                |
| 1-10V 3in1调光接口   | N/A  |                |                |
| 辅助供电             | N/A  |                |                |
| 调光范围             | N/A  |                |                |
| 调光驱动方式           | N/A  |                |                |
| <b>应急支持</b>      |  |                |                |
| 中央式应急照明系统        | 支持   |                |                |
| 独立式应急照明系统        | 支持   |                |                |
| <b>环境&amp;寿命</b> |  |                |                |
| 工作温度             | Ta=-20-50°C  |                | Ta=-20-55°C    |
| 外壳温度             | Tc=90°C  |                |                |
| 工作湿度             | 5-85% RH, 无冷凝  |                |                |
| 储存温度/湿度          | -40-80°C, 5-85% RH, 无冷凝  |                |                |
| IP等级             | IP20   |                |                |
| MTBF             | 500,000H,MIL-HDBK-217F(25°C)   |                |                |
| 使用寿命             | 常规使用条件下可达100,000小时, 详见后面的描述  |                |                |
| 耐振动              | 10 ~ 500Hz, 5G 12分钟/周期, X、Y、Z轴各72分钟                                  |                |                |
| 噪声               | <25dB(30cm, 正常工作)  |                |                |
| 环保               | RoHS   |                |                |
| <b>认证和标准</b>     |  |                |                |
| 认证               | CE, ENEC,RCM,UKCA,CCC  |                |                |
| 安全               | EN61347-1, EN61347-2-13, EN62384                                     |                |                |
| EMC              | EN55015, EN61000-3-2, EN61000-3-3, EN61000-4-2,3,4,5,6,8,11, EN61547 |                |                |
| DALI-2           | N/A  |                |                |
| RF               | N/A  |                |                |

**备注**

1. 如未特别说明, 所有规格参数均在输入为230VAC、满载、25°C环境温度下进行量测。

## 技术参数

| 产品型号             | BK-HGV060-12V0   | BK-HGV060-24V0 |  |
|------------------|--|----------------|--|
| <b>输出参数</b>      |  |                |  |
| 恒定方式             | 恒压   | 恒压             |  |
| 额定输出电流           | 5A   | 2.5A           |  |
| 额定输出电压           | 12VDC  | 24VDC          |  |
| 额定输出功率           | 60W Max  | 60W Max        |  |
| 输出恒压调节方式         | 固定输出   | 固定输出           |  |
| 电压低频纹波           | ±2%  | ±2%            |  |
| 电压精度             | ±5%  | ±5%            |  |
| 线性调整率            | ±1%  | ±1%            |  |
| 负载调整率            | ±5%  | ±5%            |  |
| 无频闪性能            | Pst LM=0.000, SVM=0.000,(以上参数以恒压灯带测试所得)                              |                |  |
| <b>输入参数</b>      |  |                |  |
| 额定工作电压范围         | 200-240VAC   |                |  |
| 极限电压范围           | 180-264VAC   |                |  |
| 抗短时高压能力          | <380 V AC  |                |  |
| 输入电流             | <0.45A (AC200V)  |                |  |
| 工作频率             | 50/60Hz  |                |  |
| 功率因数/相移因数        | PF: 0.99,DF: 0.99, 详见后面的电气曲线图  |                |  |
| 总谐波失真            | 8%, 详见后面的电气曲线图   |                |  |
| 转换效率(Max)        | 89%, 详见后面的电气曲线图  |                |  |
| 开机浪涌电流           | 30A peak ,300us duration(50% Ipeak), 详见后面的描述                         |                |  |
| 启动时间             | <0.5s(AC开灯),<0.5s(DC开灯),<0.3s(AC/DC切换),<0.5s(关灯)                     |                |  |
| 开关寿命             | > 50,000次  |                |  |
| 功率消耗             | 满载(Pin):67.4W, 空载(Pno): N/A, 待机(Psb) : N/A, 网络待机(Pnet) : N/A         |                |  |
| <b>安全</b>        |  |                |  |
| 耐压               | I/P-O/P(LED):3750VAC,I/P-FG:1750VAC,O/P-FG:500VAC                    |                |  |
| 雷击               | L-N:2KV,L-FG/N-FG:2KV  |                |  |
| 泄漏电流             | <0.7mA (230V AC & 满载)  |                |  |
| 绝缘阻抗             | I/P-O/P:100MΩ/500Vdc/25°C/70% RH                                     |                |  |
| <b>控制接口</b>      |  |                |  |
| DALI调光接口         | N/A  |                |  |
| pushDIM调光接口      | N/A  |                |  |
| 1-10V 3in1调光接口   | N/A  |                |  |
| 辅助供电             | N/A  |                |  |
| 调光范围             | N/A  |                |  |
| 调光驱动方式           | N/A  |                |  |
| <b>应急支持</b>      |  |                |  |
| 中央式应急照明系统        | 支持   |                |  |
| 独立式应急照明系统        | 支持   |                |  |
| <b>环境&amp;寿命</b> |  |                |  |
| 工作温度             | Ta=-20-50°C  |                |  |
| 外壳温度             | Tc=90°C  |                |  |
| 工作湿度             | 5-85% RH, 无冷凝  |                |  |
| 储存温度/湿度          | -40-80°C, 5-85% RH, 无冷凝  |                |  |
| IP等级             | IP20   |                |  |
| MTBF             | 500,000H,MIL-HDBK-217F(25°C)   |                |  |
| 使用寿命             | 常规使用条件下可达100,000小时, 详见后面的描述  |                |  |
| 耐振动              | 10 ~ 500Hz, 5G 12分钟/周期, X、Y、Z轴各72分钟                                  |                |  |
| 噪声               | <25dB(30cm, 正常工作)  |                |  |
| 环保               | RoHS   |                |  |
| <b>认证和标准</b>     |  |                |  |
| 认证               | CE, ENEC,RCM,UKCA,CCC  |                |  |
| 安全               | EN61347-1, EN61347-2-13, EN62384                                     |                |  |
| EMC              | EN55015, EN61000-3-2, EN61000-3-3, EN61000-4-2,3,4,5,6,8,11, EN61547 |                |  |
| DALI-2           | N/A  |                |  |
| RF               | N/A  |                |  |

## 备注

1. 如未特别说明, 所有规格参数均在输入为230VAC、满载、25°C环境温度下进行量测。

**技术参数**

|                  |  |
|------------------|--|
| 产品型号             | BK-HGV070-48V0   |
| <b>输出参数</b>      |  |
| 恒定方式             | 恒压   |
| 额定输出电流           | 1.5A   |
| 额定输出电压           | 48VDC  |
| 额定输出功率           | 72W Max  |
| 输出恒压调节方式         | 固定输出   |
| 电压低频纹波           | ±2%  |
| 电压精度             | ±5%  |
| 线性调整率            | ±1%  |
| 负载调整率            | ±5%  |
| 无频闪性能            | Pst LM=0.000, SVM=0.000,(以上参数以恒压灯带测试所得)                              |
| <b>输入参数</b>      |  |
| 额定工作电压范围         | 200-240VAC   |
| 极限电压范围           | 180-264VAC   |
| 抗短时高压能力          | <380 V AC  |
| 输入电流             | <0.5A (AC200V)   |
| 工作频率             | 50/60Hz  |
| 功率因数/相移因数        | PF: 0.99,DF: 0.99, 详见后面的电气曲线图  |
| 总谐波失真            | 7%, 详见后面的电气曲线图   |
| 转换效率(Max)        | 92%, 详见后面的电气曲线图  |
| 开机浪涌电流           | 34A peak ,360us duration(50% Ipeak), 详见后面的描述                         |
| 启动时间             | <0.5s(AC开灯),<0.5s(DC开灯),<0.3s(AC/DC切换),<0.5s(关灯)                     |
| 开关寿命             | > 50,000次  |
| 功率消耗             | 满载(Pin):78.3W, 空载(Pno): N/A, 待机(Psb) : N/A, 网络待机(Pnet) : N/A         |
| <b>安全</b>        |  |
| 耐压               | I/P-O/P(LED):3750VAC,I/P-FG:1750VAC,O/P-FG:500VAC                    |
| 雷击               | L-N:2KV,L-FG/N-FG:2KV  |
| 泄漏电流             | <0.7mA (230V AC & 满载)  |
| 绝缘阻抗             | I/P-O/P:100MΩ/500Vdc/25°C/70% RH                                     |
| <b>控制接口</b>      |  |
| DALI调光接口         | N/A  |
| pushDIM调光接口      | N/A  |
| 1-10V 3in1调光接口   | N/A  |
| 辅助供电             | N/A  |
| 调光范围             | N/A  |
| 调光驱动方式           | N/A  |
| <b>应急支持</b>      |  |
| 中央式应急照明系统        | 支持   |
| 独立式应急照明系统        | 支持   |
| <b>环境&amp;寿命</b> |  |
| 工作温度             | Ta=-20-60°C  |
| 外壳温度             | Tc=90°C  |
| 工作湿度             | 5-85% RH, 无冷凝  |
| 储存温度/湿度          | -40-80°C, 5-85% RH, 无冷凝  |
| IP等级             | IP20   |
| MTBF             | 500,000H,MIL-HDBK-217F(25°C)   |
| 使用寿命             | 常规使用条件下可达100,000小时, 详见后面的描述  |
| 耐振动              | 10 ~ 500Hz, 5G 12分钟/周期, X、Y、Z轴各72分钟                                  |
| 噪声               | <25dB(30cm, 正常工作)  |
| 环保               | RoHS   |
| <b>认证和标准</b>     |  |
| 认证               | CE, ENEC,RCM,UKCA,CCC  |
| 安全               | EN61347-1, EN61347-2-13, EN62384                                     |
| EMC              | EN55015, EN61000-3-2, EN61000-3-3, EN61000-4-2,3,4,5,6,8,11, EN61547 |
| DALI-2           | N/A  |
| RF               | N/A  |

**备注**

1. 如未特别说明, 所有规格参数均在输入为230VAC、满载、25°C环境温度下进行量测。

**技术参数**

| 产品型号             | BK-HGV072-12V0   | BK-HGV072-24V0 |  |
|------------------|--|----------------|--|
| <b>输出参数</b>      |  |                |  |
| 恒定方式             | 恒压   | 恒压             |  |
| 额定输出电流           | 6A   | 3A             |  |
| 额定输出电压           | 12VDC  | 24VDC          |  |
| 额定输出功率           | 72W Max  | 72W Max        |  |
| 输出恒压调节方式         | 固定输出   | 固定输出           |  |
| 电压低频纹波           | ±2%  | ±2%            |  |
| 电压精度             | ±5%  | ±5%            |  |
| 线性调整率            | ±1%  | ±1%            |  |
| 负载调整率            | ±5%  | ±5%            |  |
| 无频闪性能            | Pst LM=0.002, SVM=0.000,(以上参数以恒压灯带测试所得)                              |                |  |
| <b>输入参数</b>      |  |                |  |
| 额定工作电压范围         | 200-240VAC   |                |  |
| 极限电压范围           | 180-264VAC   |                |  |
| 抗短时高压能力          | <380 V AC  |                |  |
| 输入电流             | <0.5A (AC200V)   |                |  |
| 工作频率             | 50/60Hz  |                |  |
| 功率因数/相移因数        | PF: 0.99,DF: 0.99, 详见后面的电气曲线图  |                |  |
| 总谐波失真            | 5%, 详见后面的电气曲线图   |                |  |
| 转换效率(Max)        | 91%, 详见后面的电气曲线图  |                |  |
| 开机浪涌电流           | 40A peak ,336us duration(50% Ipeak), 详见后面的描述                         |                |  |
| 启动时间             | <0.5s(AC开灯),<0.5s(DC开灯),<0.3s(AC/DC切换),<0.5s(关灯)                     |                |  |
| 开关寿命             | > 50,000次  |                |  |
| 功率消耗             | 满载(Pin):79.1W, 空载(Pno): N/A, 待机(Psb) : N/A, 网络待机(Pnet) : N/A         |                |  |
| <b>安全</b>        |  |                |  |
| 耐压               | I/P-O/P(LED):3750VAC,I/P-FG:1750VAC,O/P-FG:500VAC                    |                |  |
| 雷击               | L-N:2KV,L-FG/N-FG:2KV  |                |  |
| 泄漏电流             | <0.7mA (230V AC & 满载)  |                |  |
| 绝缘阻抗             | I/P-O/P:100MΩ/500Vdc/25°C/70% RH                                     |                |  |
| <b>控制接口</b>      |  |                |  |
| DALI调光接口         | N/A  |                |  |
| pushDIM调光接口      | N/A  |                |  |
| 1-10V 3in1调光接口   | N/A  |                |  |
| 辅助供电             | N/A  |                |  |
| 调光范围             | N/A  |                |  |
| 调光驱动方式           | N/A  |                |  |
| <b>应急支持</b>      |  |                |  |
| 中央式应急照明系统        | 支持   |                |  |
| 独立式应急照明系统        | 支持   |                |  |
| <b>环境&amp;寿命</b> |  |                |  |
| 工作温度             | Ta=-20-50°C  |                |  |
| 外壳温度             | Tc=90°C  |                |  |
| 工作湿度             | 5-85% RH, 无冷凝  |                |  |
| 储存温度/湿度          | -40-80°C, 5-85% RH, 无冷凝  |                |  |
| IP等级             | IP20   |                |  |
| MTBF             | 500,000H,MIL-HDBK-217F(25°C)   |                |  |
| 使用寿命             | 常规使用条件下可达100,000小时, 详见后面的描述  |                |  |
| 耐振动              | 10 ~ 500Hz, 5G 12分钟/周期, X、Y、Z轴各72分钟                                  |                |  |
| 噪声               | <25dB(30cm, 正常工作)  |                |  |
| 环保               | RoHS   |                |  |
| <b>认证和标准</b>     |  |                |  |
| 认证               | CE, ENEC,RCM,UKCA,CCC  |                |  |
| 安全               | EN61347-1, EN61347-2-13, EN62384                                     |                |  |
| EMC              | EN55015, EN61000-3-2, EN61000-3-3, EN61000-4-2,3,4,5,6,8,11, EN61547 |                |  |
| DALI-2           | N/A  |                |  |
| RF               | N/A  |                |  |

**备注**

1. 如未特别说明, 所有规格参数均在输入为230VAC、满载、25°C环境温度下进行量测。

## 技术参数

| 产品型号             | BK-HGV100-24V0   | BK-HGV100-48V0 |  |
|------------------|--|----------------|--|
| <b>输出参数</b>      |  |                |  |
| 恒定方式             | 恒压   | 恒压             |  |
| 额定输出电流           | 4A   | 2A             |  |
| 额定输出电压           | 24VDC  | 48VDC          |  |
| 额定输出功率           | 96W Max  | 96W Max        |  |
| 输出恒压调节方式         | 固定输出   | 固定输出           |  |
| 电压低频纹波           | ±2%  | ±2%            |  |
| 电压精度             | ±5%  | ±5%            |  |
| 线性调整率            | ±1%  | ±1%            |  |
| 负载调整率            | ±5%  | ±5%            |  |
| 无频闪性能            | Pst LM=0.012, SVM=0.013,(以上参数以恒压灯带测试所得)                              |                |  |
| <b>输入参数</b>      |  |                |  |
| 额定工作电压范围         | 200-240VAC   |                |  |
| 极限电压范围           | 180-264VAC   |                |  |
| 抗短时高压能力          | <380 V AC  |                |  |
| 输入电流             | <0.8A (AC200V)   |                |  |
| 工作频率             | 50/60Hz  |                |  |
| 功率因数/相移因数        | PF: 0.99,DF: 0.99, 详见后面的电气曲线图  |                |  |
| 总谐波失真            | 6%, 详见后面的电气曲线图   |                |  |
| 转换效率(Max)        | 93%, 详见后面的电气曲线图  |                |  |
| 开机浪涌电流           | 47A peak ,293us duration(50% Ipeak), 详见后面的描述                         |                |  |
| 启动时间             | <0.5s(AC开灯),<0.5s(DC开灯),<0.3s(AC/DC切换),<0.5s(关灯)                     |                |  |
| 开关寿命             | > 50,000次  |                |  |
| 功率消耗             | 满载(Pin):103.2W, 空载(Pno): N/A, 待机(Psb): N/A, 网络待机(Pnet): N/A          |                |  |
| <b>安全</b>        |  |                |  |
| 耐压               | I/P-O/P(LED):3750VAC,I/P-FG:1750VAC,O/P-FG:500VAC                    |                |  |
| 雷击               | L-N:2KV,L-FG/N-FG:2KV  |                |  |
| 泄漏电流             | <0.7mA (230V AC & 满载)  |                |  |
| 绝缘阻抗             | I/P-O/P:100MΩ/500Vdc/25°C/70% RH                                     |                |  |
| <b>控制接口</b>      |  |                |  |
| DALI调光接口         | N/A  |                |  |
| pushDIM调光接口      | N/A  |                |  |
| 1-10V 3in1调光接口   | N/A  |                |  |
| 辅助供电             | N/A  |                |  |
| 调光范围             | N/A  |                |  |
| 调光驱动方式           | N/A  |                |  |
| <b>应急支持</b>      |  |                |  |
| 中央式应急照明系统        | 不支持  |                |  |
| 独立式应急照明系统        | 支持   |                |  |
| <b>环境&amp;寿命</b> |  |                |  |
| 工作温度             | Ta=-20-50°C  |                |  |
| 外壳温度             | Tc=90°C  |                |  |
| 工作湿度             | 5-85% RH, 无冷凝  |                |  |
| 储存温度/湿度          | -40-80°C, 5-85% RH, 无冷凝  |                |  |
| IP等级             | IP20   |                |  |
| MTBF             | 500,000H,MIL-HDBK-217F(25°C)   |                |  |
| 使用寿命             | 常规使用条件下可达100,000小时, 详见后面的描述  |                |  |
| 耐振动              | 10 ~ 500Hz, 5G 12分钟/周期, X、Y、Z轴各72分钟                                  |                |  |
| 噪声               | <25dB(30cm, 正常工作)  |                |  |
| 环保               | RoHS   |                |  |
| <b>认证和标准</b>     |  |                |  |
| 认证               | CE, ENEC,RCM,UKCA,CCC  |                |  |
| 安全               | EN61347-1, EN61347-2-13, EN62384                                     |                |  |
| EMC              | EN55015, EN61000-3-2, EN61000-3-3, EN61000-4-2,3,4,5,6,8,11, EN61547 |                |  |
| DALI-2           | N/A  |                |  |
| RF               | N/A  |                |  |

## 备注

1. 如未特别说明, 所有规格参数均在输入为230VAC、满载、25°C环境温度下进行量测。



**技术参数**

| 产品型号             | BK-HGV150-24V0   | BK-HGV150-48V0 |  |
|------------------|--|----------------|--|
| <b>输出参数</b>      |  |                |  |
| 恒定方式             | 恒压   | 恒压             |  |
| 额定输出电流           | 6A   | 3A             |  |
| 额定输出电压           | 24VDC  | 48VDC          |  |
| 额定输出功率           | 144W Max   | 144W Max       |  |
| 输出恒压调节方式         | 固定输出   | 固定输出           |  |
| 电压低频纹波           | ±2%  | ±2%            |  |
| 电压精度             | ±5%  | ±5%            |  |
| 线性调整率            | ±1%  | ±1%            |  |
| 负载调整率            | ±5%  | ±5%            |  |
| 无频闪性能            | Pst LM=0.013, SVM=0.000,(以上参数以恒压灯带测试所得)                              |                |  |
| <b>输入参数</b>      |  |                |  |
| 额定工作电压范围         | 200-240VAC   |                |  |
| 极限电压范围           | 180-264VAC   |                |  |
| 抗短时高压能力          | <380 V AC  |                |  |
| 输入电流             | <1A (AC200V)   |                |  |
| 工作频率             | 50/60Hz  |                |  |
| 功率因数/相移因数        | PF: 0.99,DF: 0.99, 详见后面的电气曲线图  |                |  |
| 总谐波失真            | 5%, 详见后面的电气曲线图   |                |  |
| 转换效率(Max)        | 93%, 详见后面的电气曲线图  |                |  |
| 开机浪涌电流           | 72A peak, 410us duration(50% Ipeak), 详见后面的描述                         |                |  |
| 启动时间             | <0.5s(AC开灯), <0.5s(DC开灯), <0.3s(AC/DC切换), <0.5s(关灯)                  |                |  |
| 开关寿命             | > 50,000次  |                |  |
| 功率消耗             | 满载(Pin):154.8W, 空载(Pno): N/A, 待机(Psb): N/A, 网络待机(Pnet): N/A          |                |  |
| <b>安全</b>        |  |                |  |
| 耐压               | I/P-O/P(LED):3750VAC,I/P-FG:1750VAC,O/P-FG:500VAC                    |                |  |
| 雷击               | L-N:2KV,L-FG/N-FG:2KV  |                |  |
| 泄漏电流             | <0.7mA (230V AC & 满载)  |                |  |
| 绝缘阻抗             | I/P-O/P:100MΩ/500Vdc/25°C/70% RH                                     |                |  |
| <b>控制接口</b>      |  |                |  |
| DALI调光接口         | N/A  |                |  |
| pushDIM调光接口      | N/A  |                |  |
| 1-10V 3in1调光接口   | N/A  |                |  |
| 辅助供电             | N/A  |                |  |
| 调光范围             | N/A  |                |  |
| 调光驱动方式           | N/A  |                |  |
| <b>应急支持</b>      |  |                |  |
| 中央式应急照明系统        | 不支持  |                |  |
| 独立式应急照明系统        | 支持   |                |  |
| <b>环境&amp;寿命</b> |  |                |  |
| 工作温度             | Ta=-20-50°C  |                |  |
| 外壳温度             | Tc=90°C  |                |  |
| 工作湿度             | 5-85% RH, 无冷凝  |                |  |
| 储存温度/湿度          | -40-80°C, 5-85% RH, 无冷凝  |                |  |
| IP等级             | IP20   |                |  |
| MTBF             | 500,000H,MIL-HDBK-217F(25°C)   |                |  |
| 使用寿命             | 常规使用条件下可达100,000小时, 详见后面的描述  |                |  |
| 耐振动              | 10 ~ 500Hz, 5G 12分钟/周期, X、Y、Z轴各72分钟                                  |                |  |
| 噪声               | <25dB(30cm, 正常工作)  |                |  |
| 环保               | RoHS   |                |  |
| <b>认证和标准</b>     |  |                |  |
| 认证               | CE, ENEC,RCM,UKCA,CCC  |                |  |
| 安全               | EN61347-1, EN61347-2-13, EN62384                                     |                |  |
| EMC              | EN55015, EN61000-3-2, EN61000-3-3, EN61000-4-2,3,4,5,6,8,11, EN61547 |                |  |
| DALI-2           | N/A  |                |  |
| RF               | N/A  |                |  |

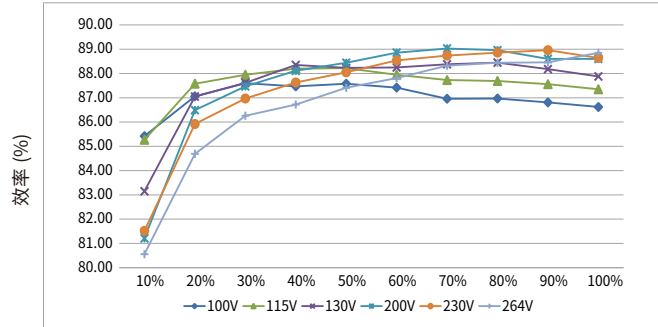
**备注**

1. 如未特别说明, 所有规格参数均在输入为230VAC、满载、25°C环境温度下进行量测。

电气曲线图

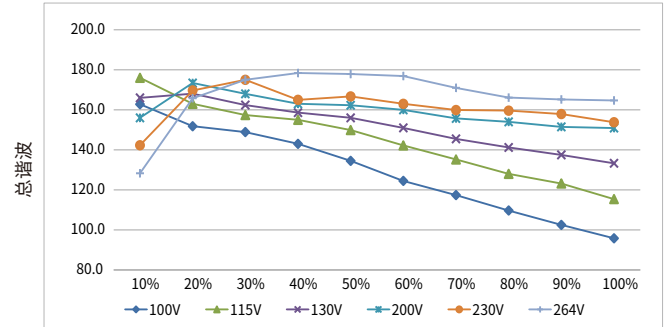
BK-HGV022-12V0

效率 vs. 负载



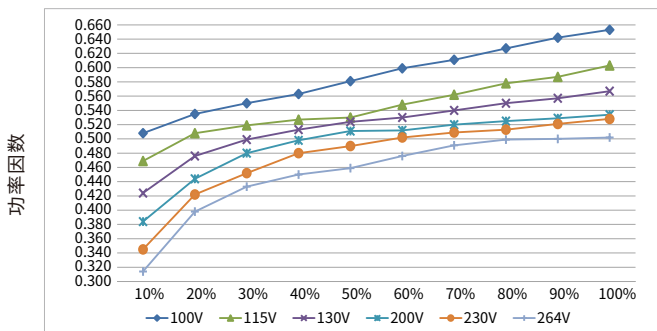
负载

总谐波 vs. 负载



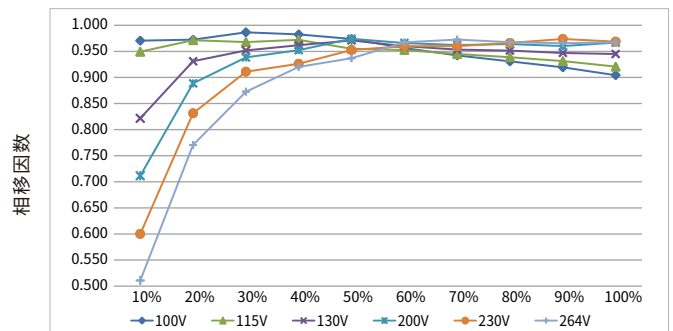
负载

功率因数 vs. 负载



负载

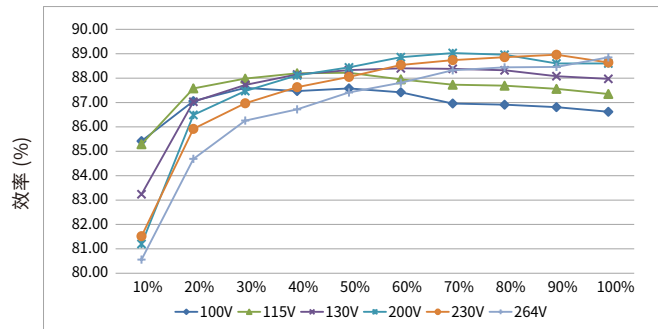
相移因数 vs. 负载



负载

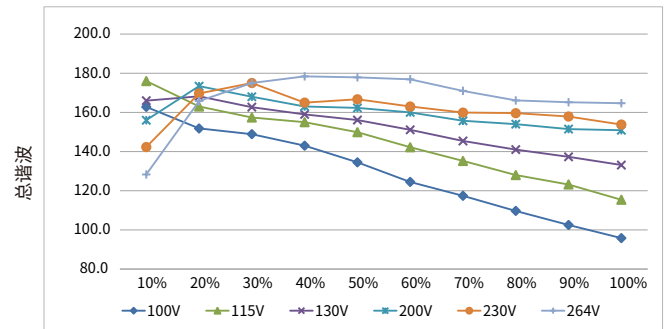
BK-HGV022-24V0

效率 vs. 负载



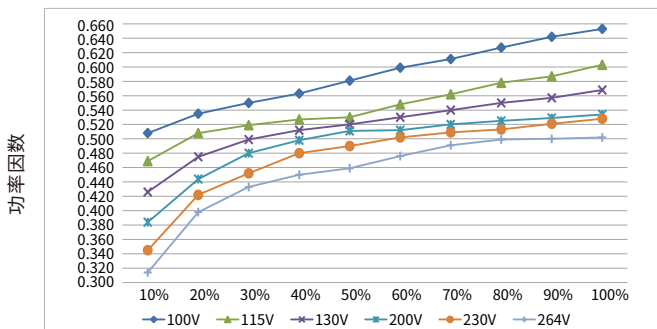
负载

总谐波 vs. 负载



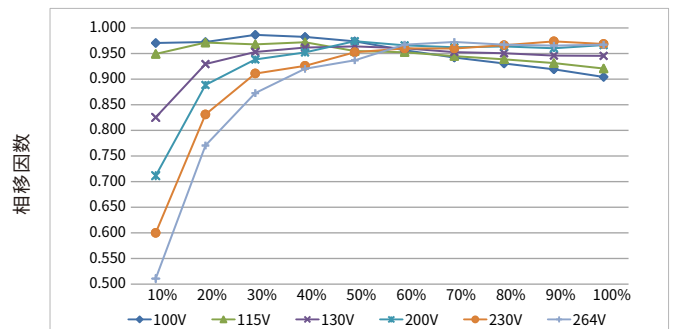
负载

功率因数 vs. 负载



负载

相移因数 vs. 负载

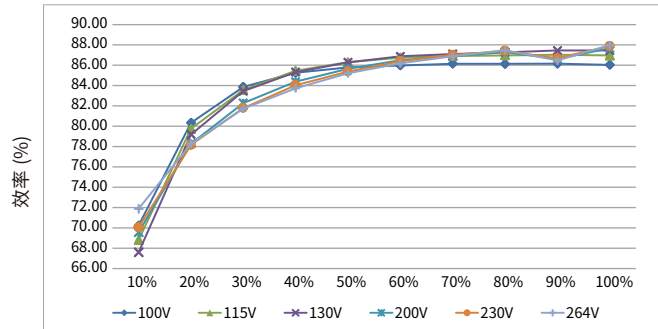


负载

电气曲线图

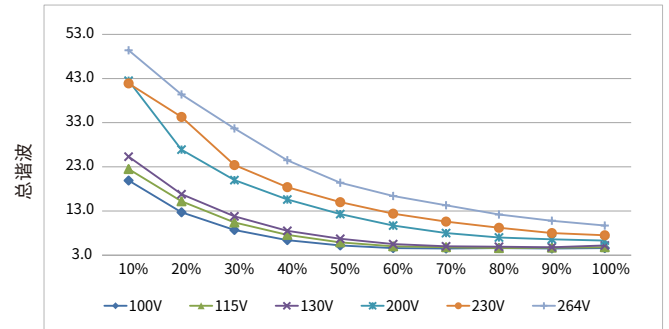
BK-HGV048-12V0

效率 vs. 负载



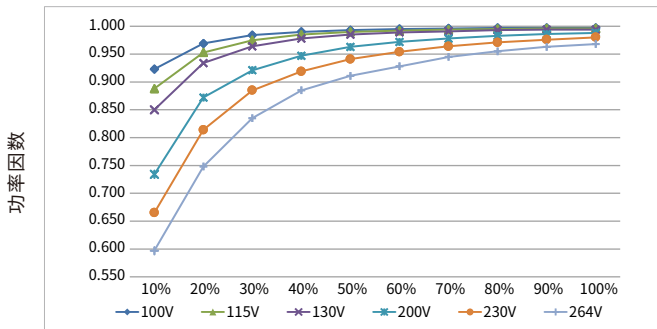
负载

总谐波 vs. 负载



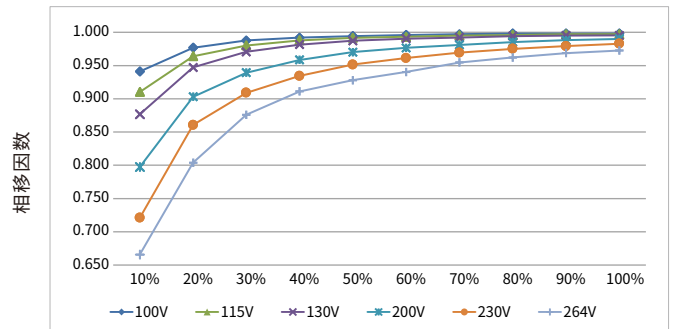
负载

功率因数 vs. 负载



负载

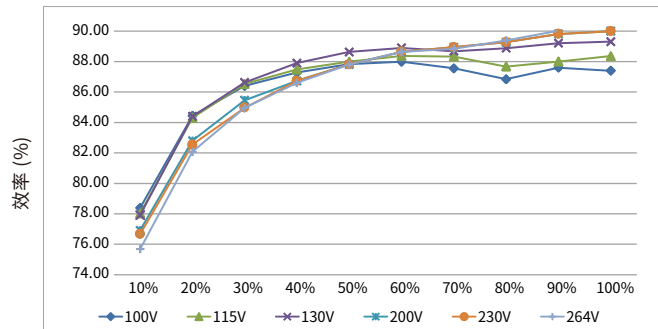
相移因数 vs. 负载



负载

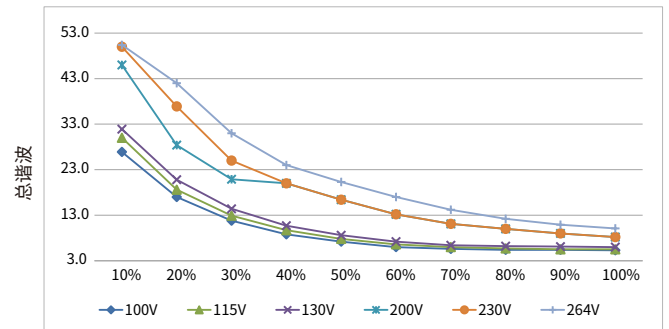
BK-HGV048-24V0

效率 vs. 负载



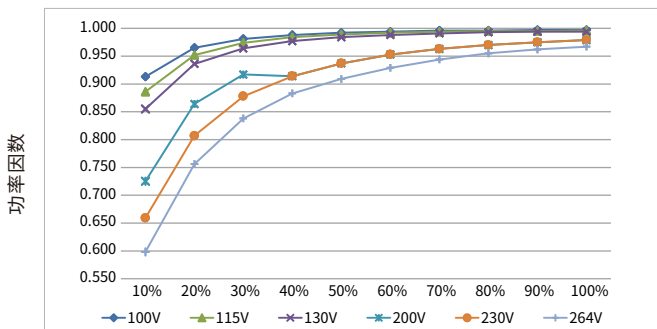
负载

总谐波 vs. 负载



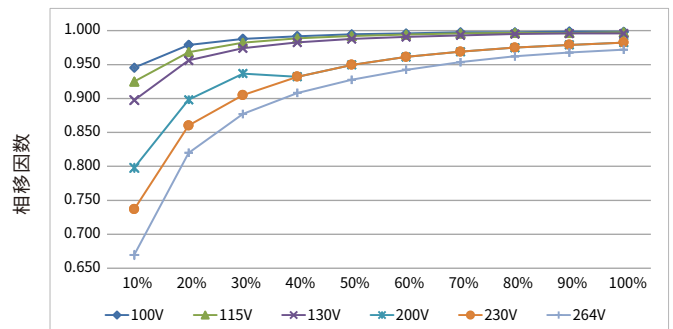
负载

功率因数 vs. 负载



负载

相移因数 vs. 负载

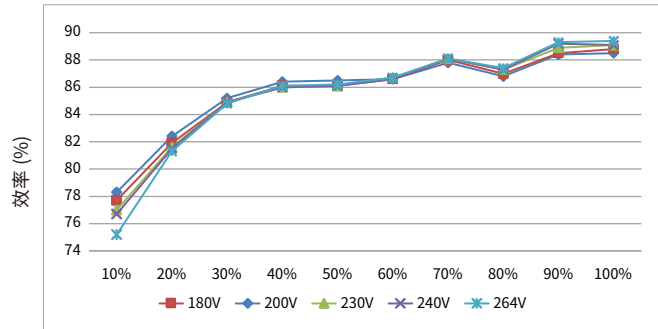


负载

电气曲线图

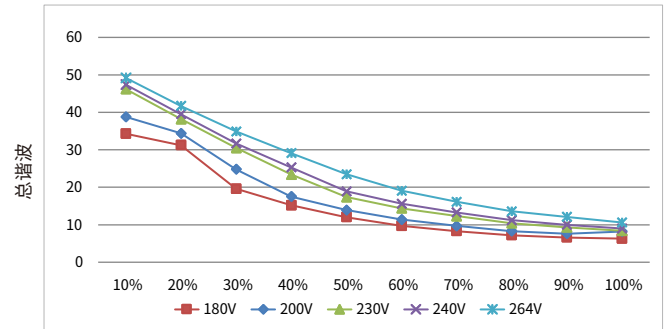
BK-HGV048-48V0

效率 vs. 负载



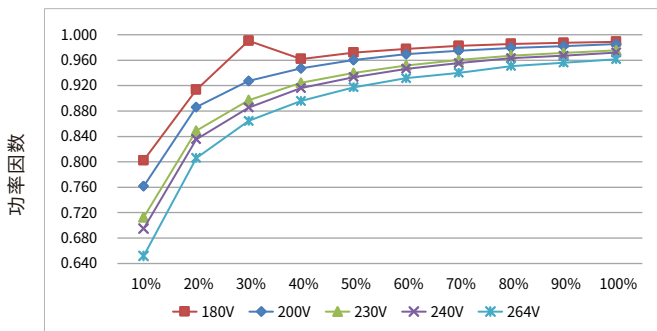
负载

总谐波 vs. 负载



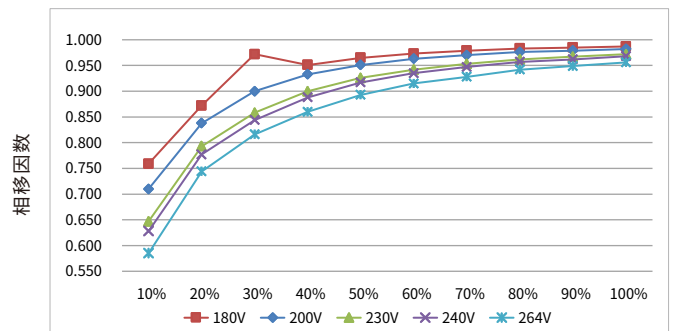
负载

功率因数 vs. 负载



负载

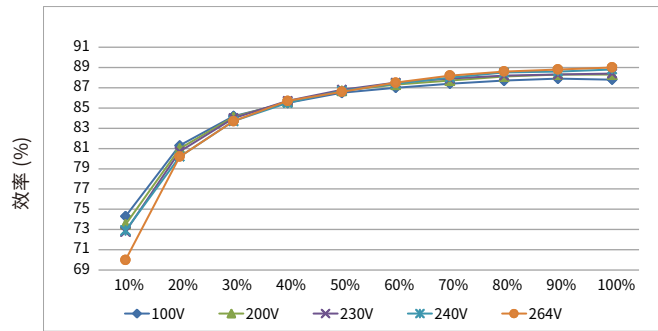
相移因数 vs. 负载



负载

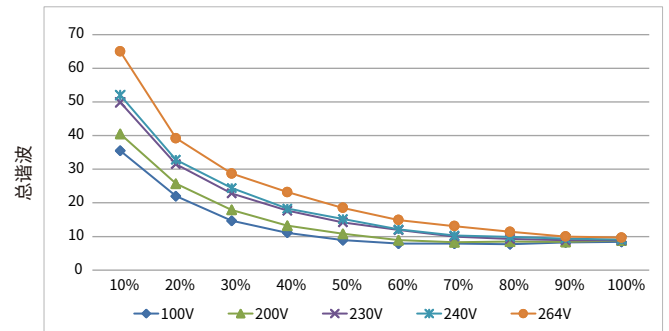
BK-HGV060-12V0

效率 vs. 负载



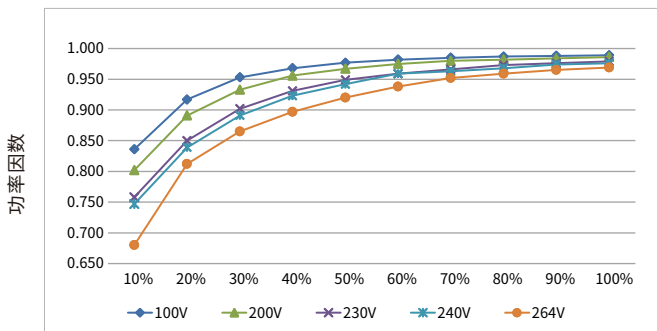
负载

总谐波 vs. 负载



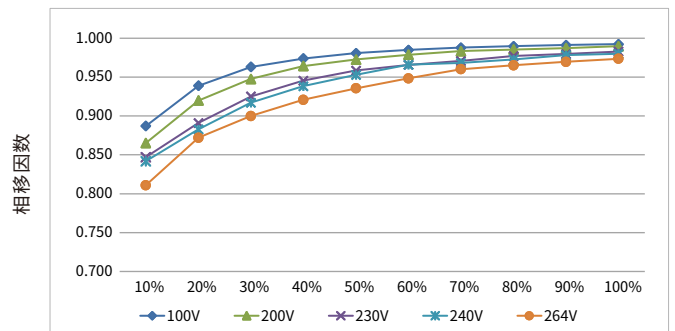
负载

功率因数 vs. 负载



负载

相移因数 vs. 负载

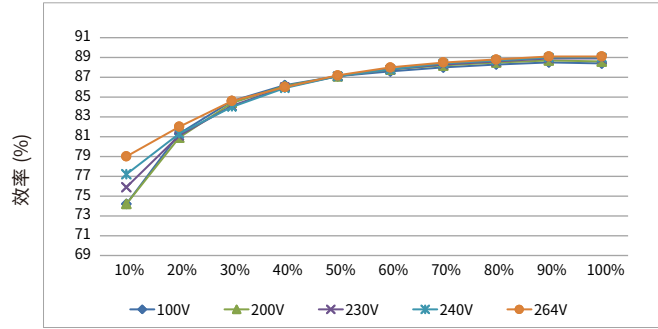


负载

电气曲线图

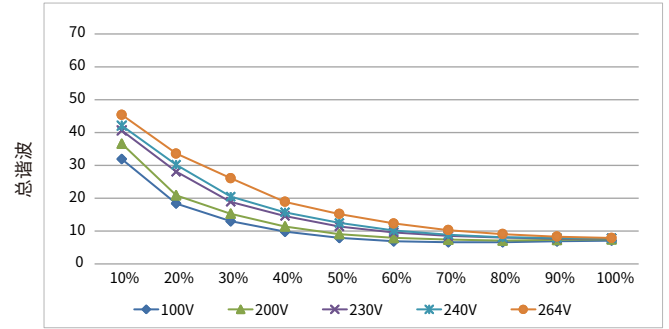
BK-HGV060-24V0

效率 vs. 负载



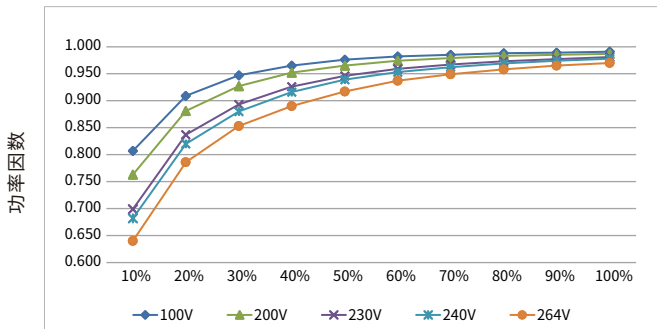
负载

总谐波 vs. 负载



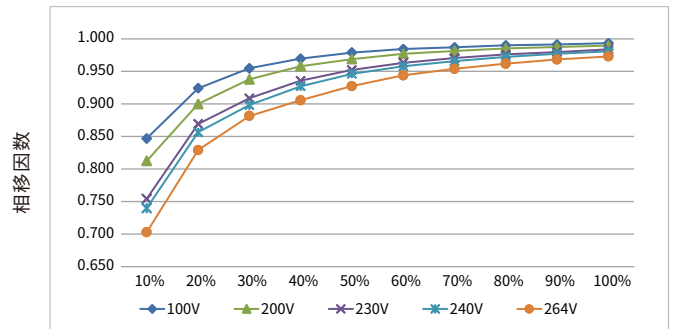
负载

功率因数 vs. 负载



负载

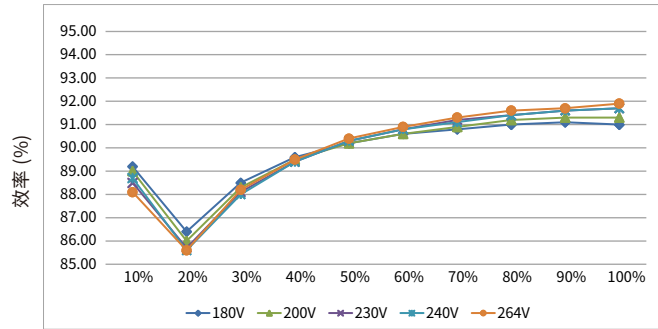
相移因数 vs. 负载



负载

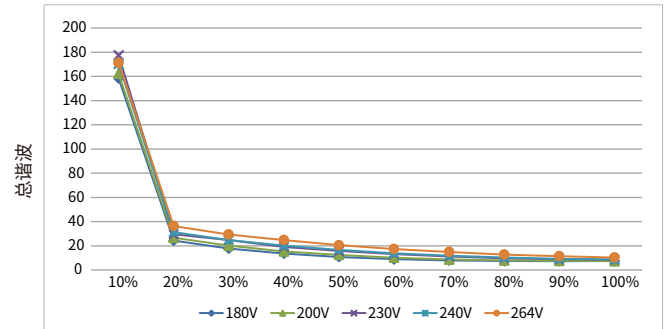
BK-HGV070-48V0

效率 vs. 负载



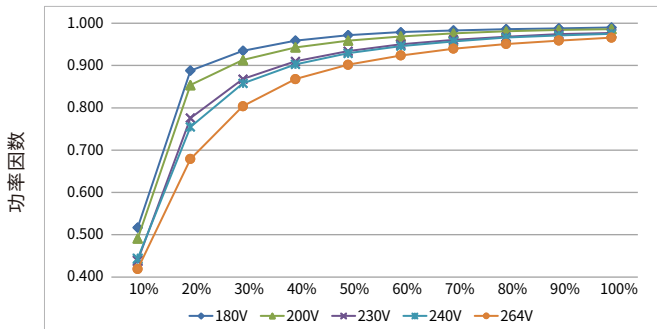
负载

总谐波 vs. 负载



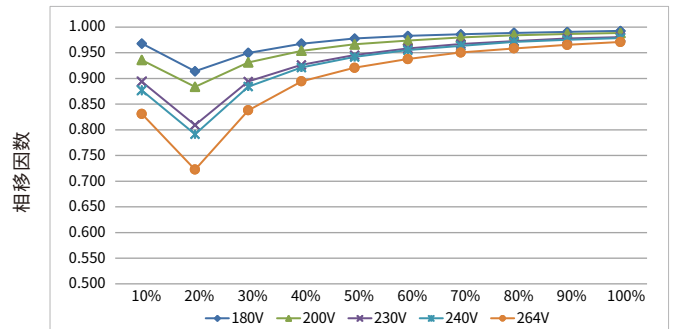
负载

功率因数 vs. 负载



负载

相移因数 vs. 负载

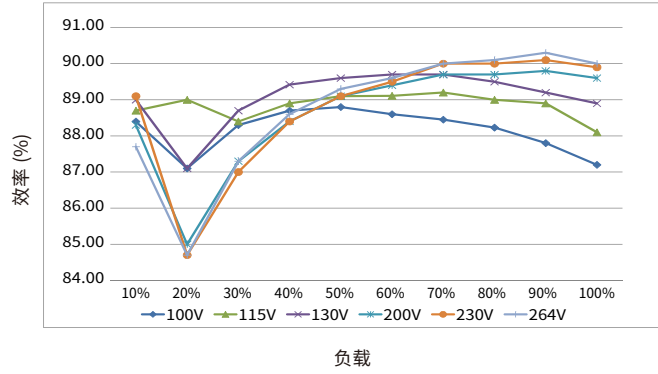


负载

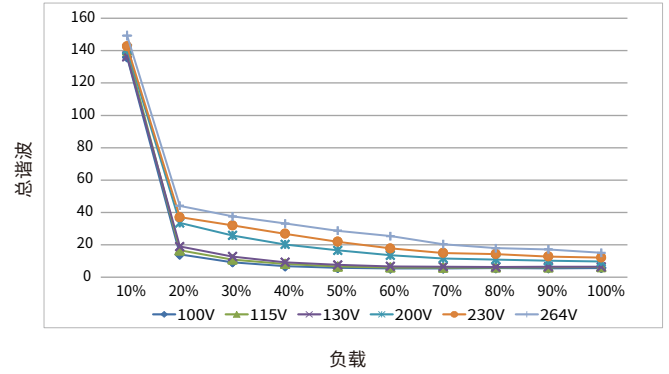
电气曲线图

BK-HGV072-12V0

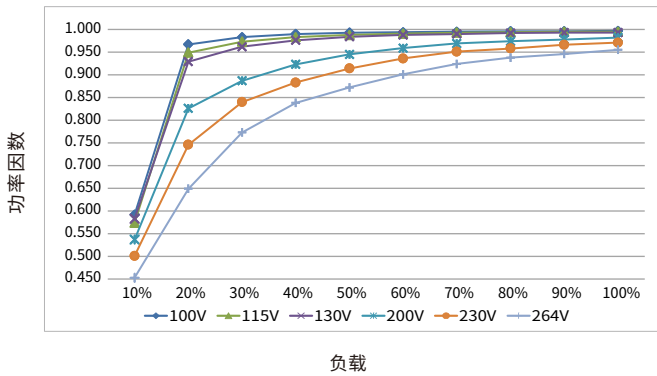
效率 vs. 负载



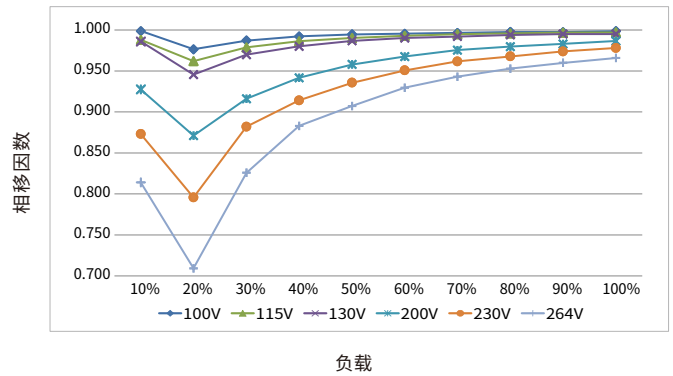
总谐波 vs. 负载



功率因数 vs. 负载

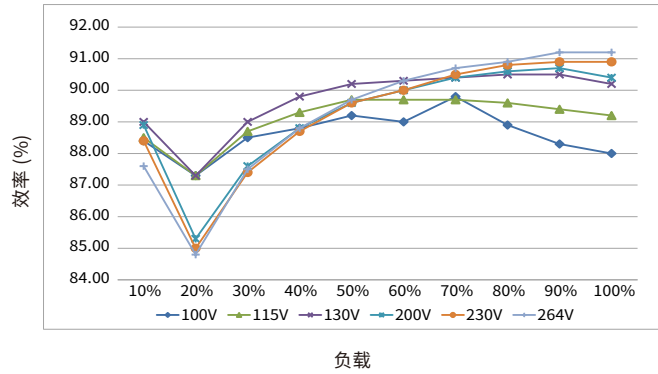


相移因数 vs. 负载

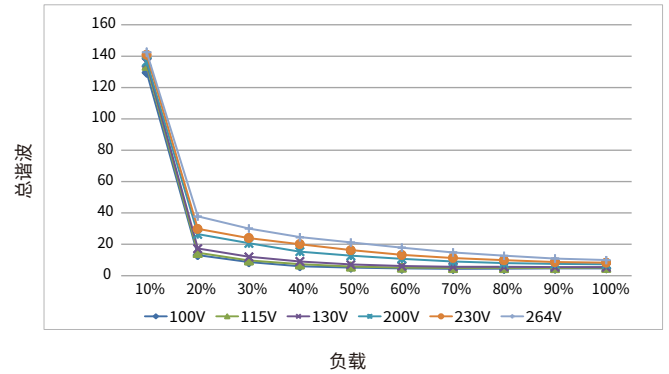


BK-HGV072-24V0

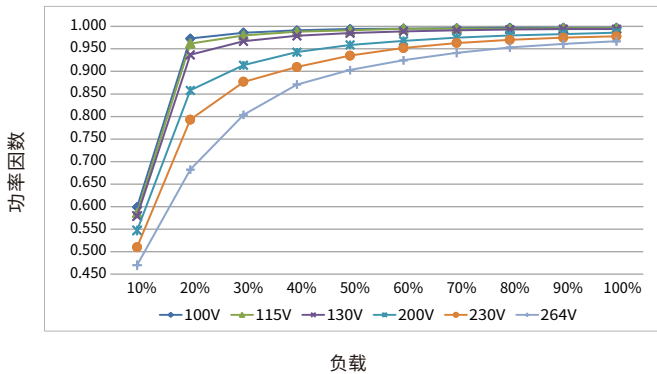
效率 vs. 负载



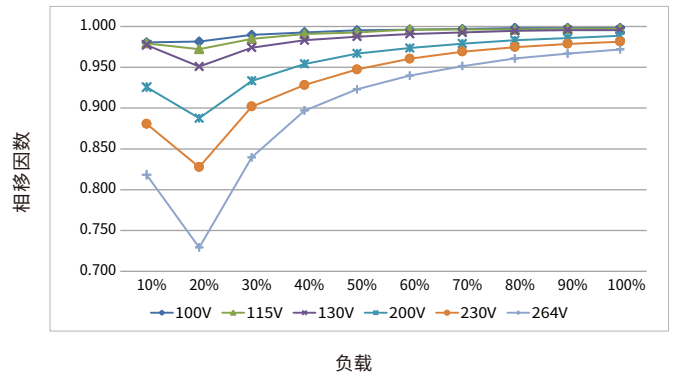
总谐波 vs. 负载



功率因数 vs. 负载



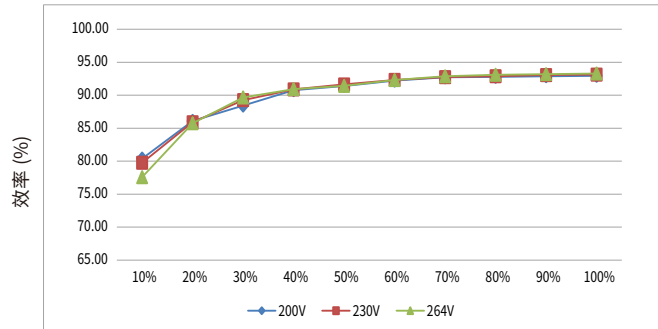
相移因数 vs. 负载



电气曲线图

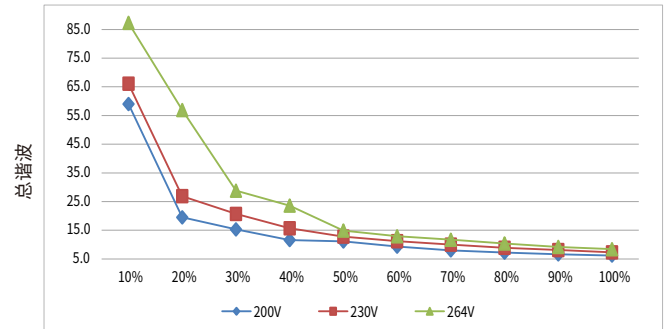
BK-HGV100-24V0

效率 vs. 负载



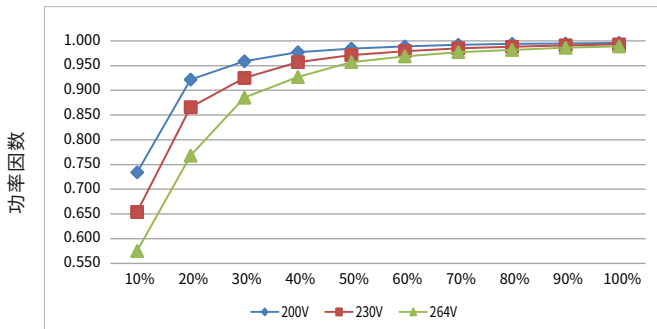
负载

总谐波 vs. 负载



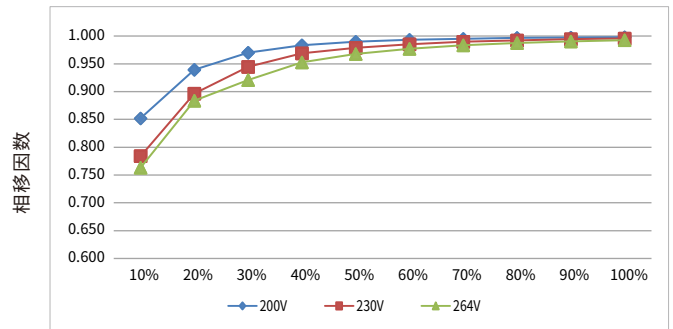
负载

功率因数 vs. 负载



负载

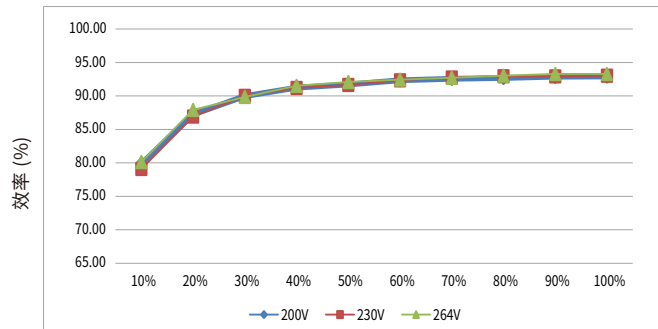
相移因数 vs. 负载



负载

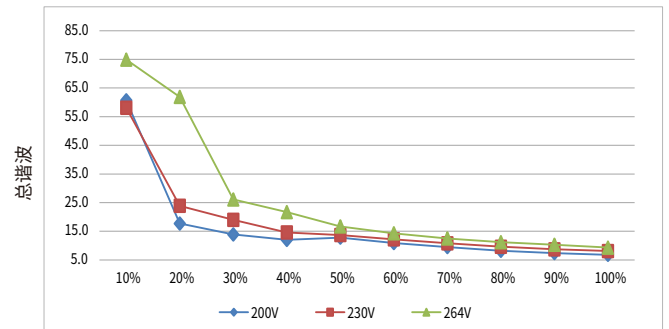
BK-HGV100-48V0

效率 vs. 负载



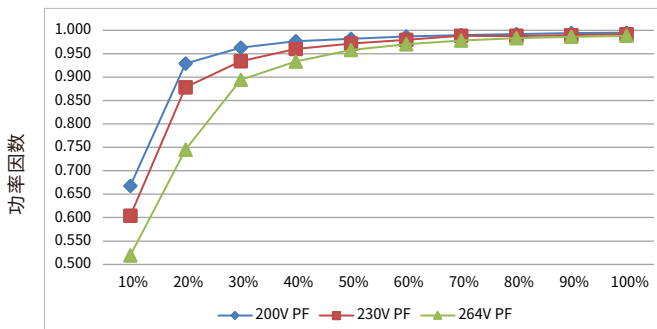
负载

总谐波 vs. 负载



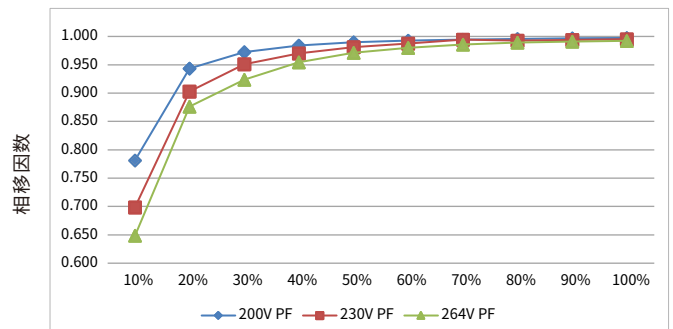
负载

功率因数 vs. 负载



负载

相移因数 vs. 负载

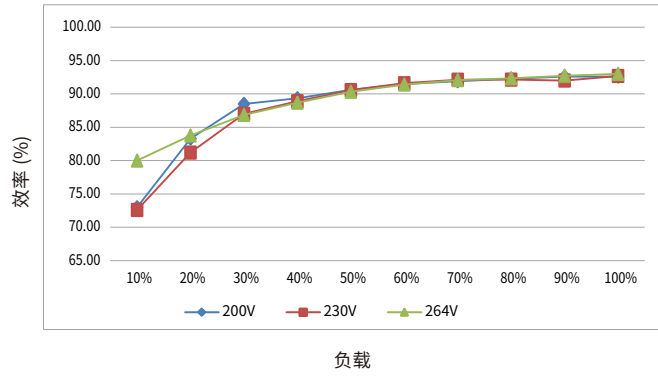


负载

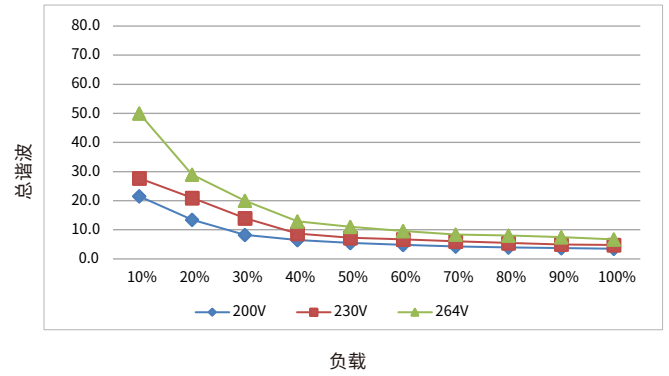
电气曲线图

BK-HGV150-24V0

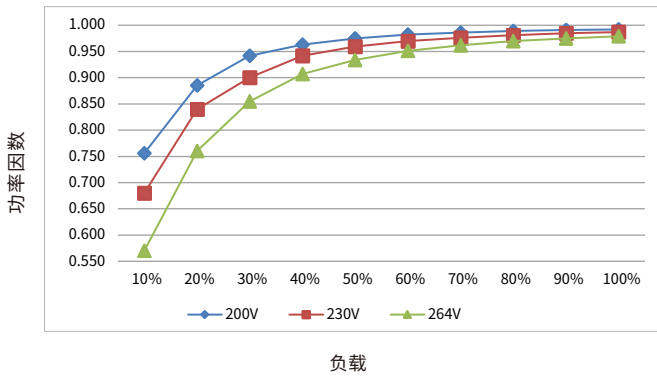
效率 vs. 负载



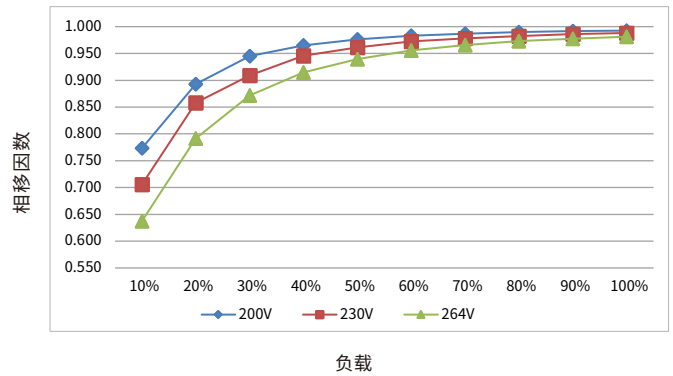
总谐波 vs. 负载



功率因数 vs. 负载

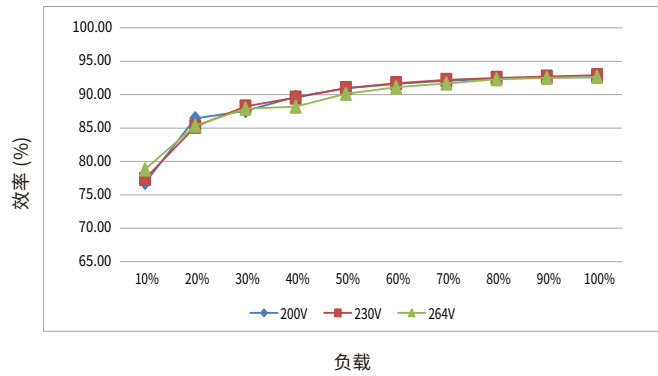


相移因数 vs. 负载

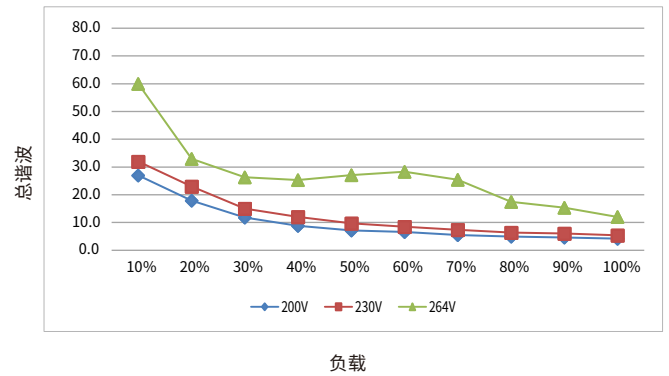


BK-HGV150-48V0

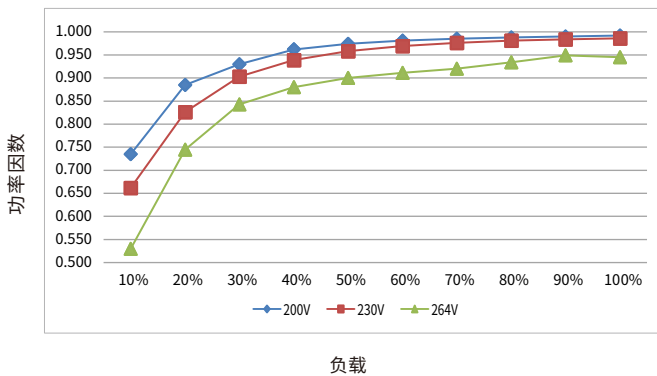
效率 vs. 负载



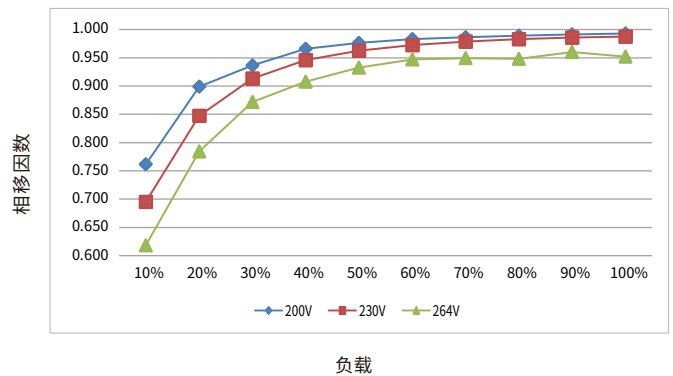
总谐波 vs. 负载



功率因数 vs. 负载



相移因数 vs. 负载

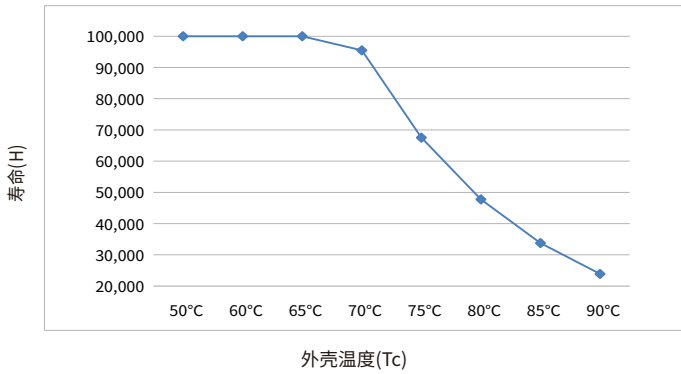




**使用寿命**

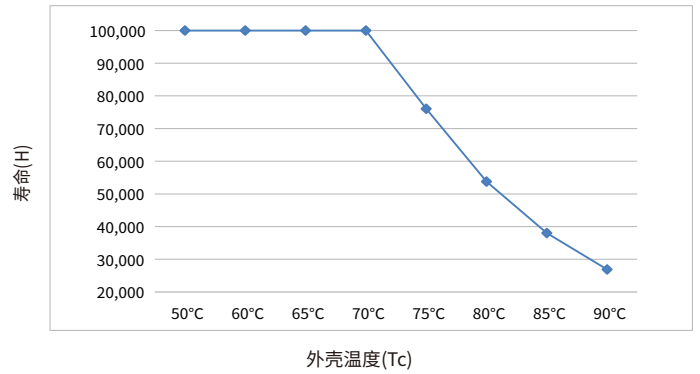
BK-HGV022-12V0

寿命 vs. 外壳温度



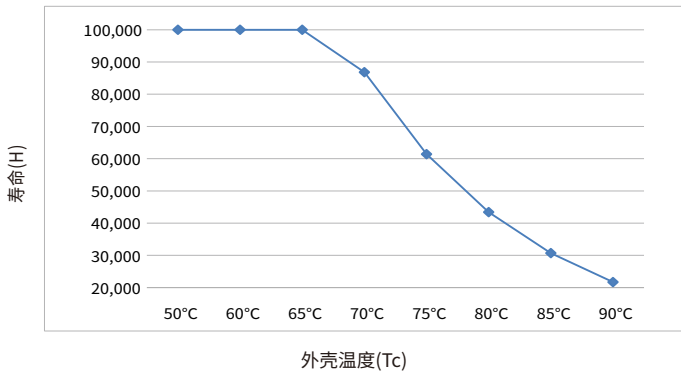
BK-HGV022-24V0

寿命 vs. 外壳温度



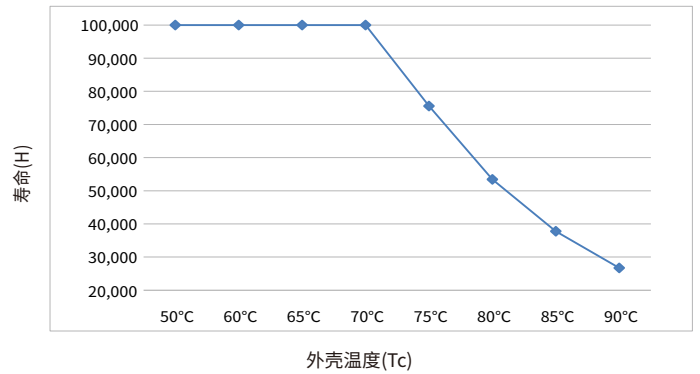
BK-HGV048-12V0

寿命 vs. 外壳温度



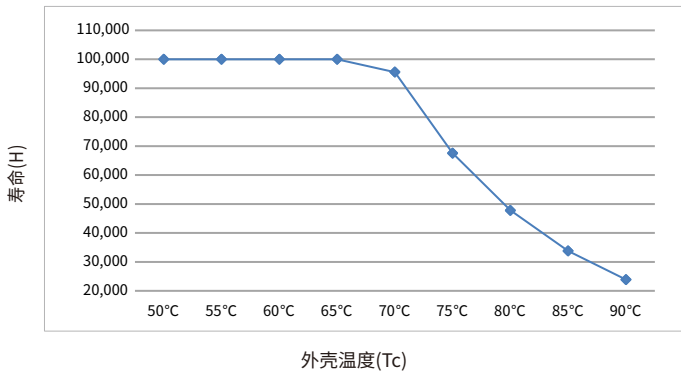
BK-HGV048-24V0

寿命 vs. 外壳温度



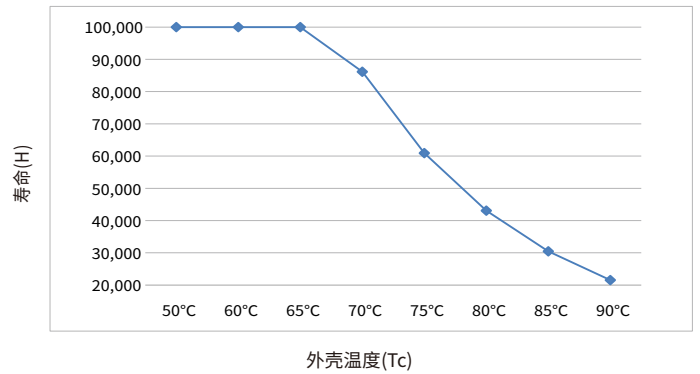
BK-HGV048-48V0

寿命 vs. 外壳温度



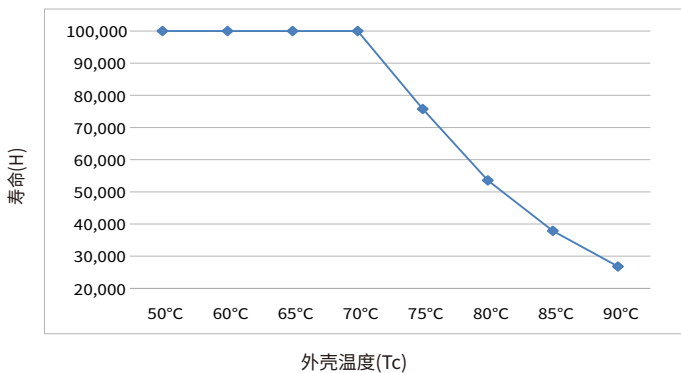
BK-HGV060-12V0

寿命 vs. 外壳温度



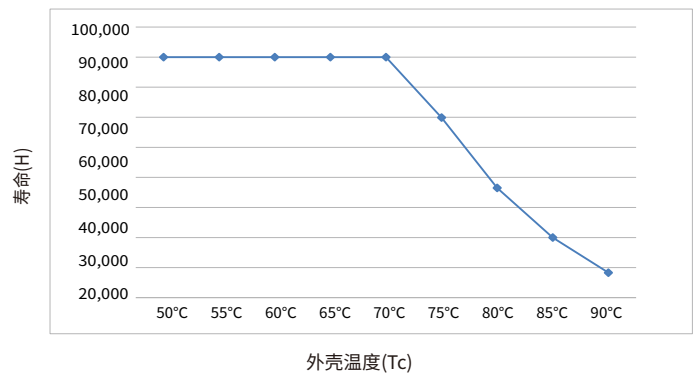
BK-HGV060-24V0

寿命 vs. 外壳温度



BK-HGV070-48V0

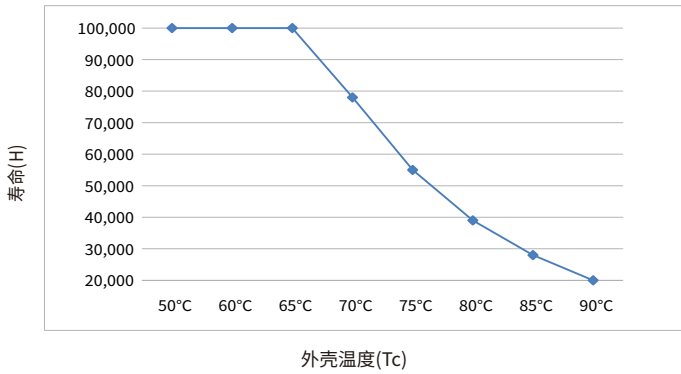
寿命 vs. 外壳温度



**使用寿命**

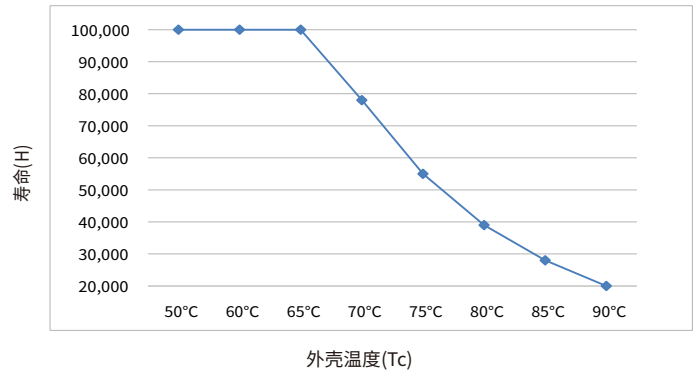
BK-HGV072-12V0

寿命 vs. 外壳温度



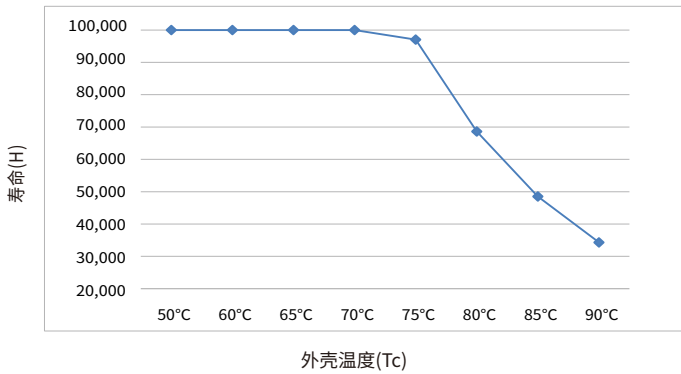
BK-HGV072-24V0

寿命 vs. 外壳温度



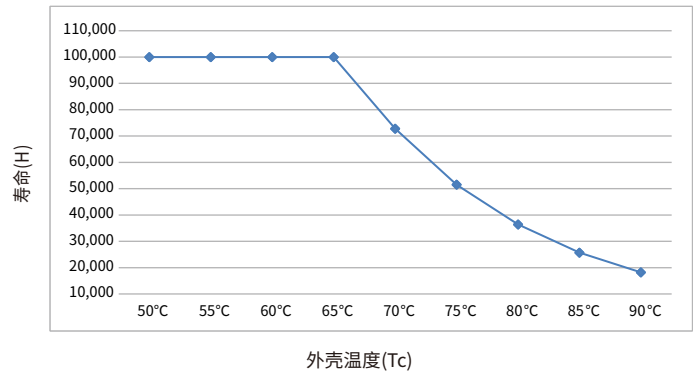
BK-HGV100-24V0

寿命 vs. 外壳温度



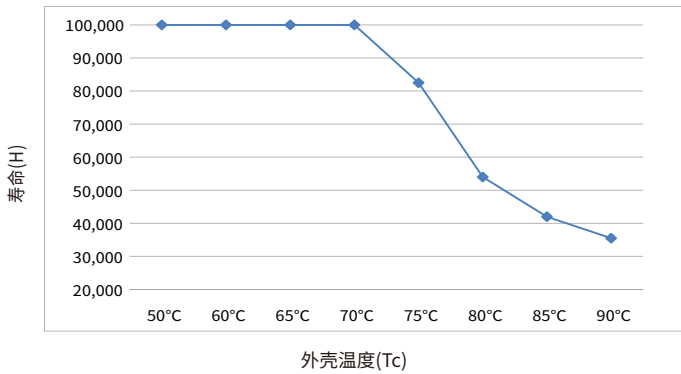
BK-HGV100-48V0

寿命 vs. 外壳温度



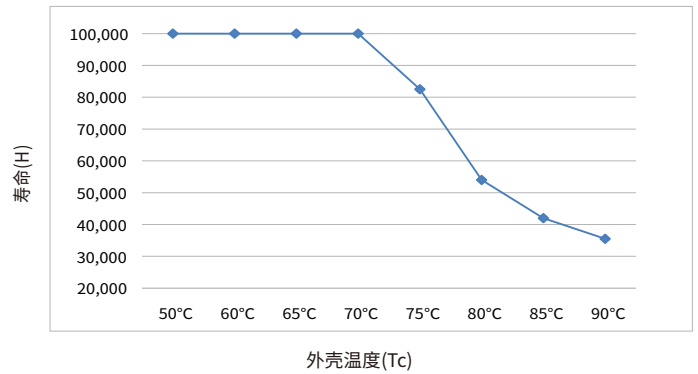
BK-HGV150-24V0

寿命 vs. 外壳温度



BK-HGV150-48V0

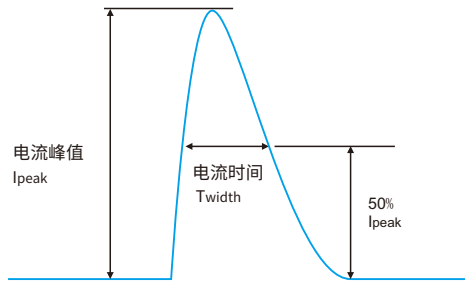
寿命 vs. 外壳温度



- LED驱动器的设计寿命如上图所示(基于90%的存活率的条件下)。
- Tc温度与Ta温度的相对关系也取决于灯具的设计。

浪涌电流&对应的MCB下挂载的数量

| 型号        | 电流峰值<br>Ipeak | 电流时间<br>Twidth | 条件                                      | MCB挂载的最大数量/台 |     |     |     |     |     |     |     |     |     |     |     |     |     |     |
|-----------|---------------|----------------|---|--------------|-----|-----|-----|-----|-----|-----|-----|-----|-----|-----|-----|-----|-----|-----|
|           |               |                |   | B10          | B13 | B16 | B20 | B25 | C10 | C13 | C16 | C20 | C25 | D10 | D13 | D16 | D20 | D25 |
| BK-HGV022 | 25.75A        | 300us          | AC 230V,满载,<br>冷启动,Ta≤30°C,<br>MCB无并排安装 | 7            | 10  | 12  | 15  | 18  | 12  | 16  | 20  | 24  | 31  | 24  | 32  | 39  | 49  | 61  |
| BK-HGV048 | 27A           | 262us          |   | 8            | 10  | 13  | 16  | 13  | 17  | 17  | 21  | 26  | 33  | 26  | 34  | 42  | 52  | 65  |
| BK-HGV060 | 30A           | 300us          |   | 6            | 8   | 10  | 13  | 16  | 11  | 14  | 17  | 21  | 26  | 21  | 27  | 34  | 42  | 53  |
| BK-HGV070 | 34A           | 360us          |   | 5            | 6   | 7   | 9   | 12  | 8   | 10  | 12  | 15  | 19  | 15  | 20  | 25  | 31  | 39  |
| BK-HGV072 | 40A           | 336us          |   | 4            | 5   | 7   | 8   | 11  | 7   | 9   | 11  | 14  | 18  | 14  | 18  | 22  | 28  | 35  |
| BK-HGV100 | 47A           | 293us          |   | 4            | 6   | 7   | 8   | 11  | 7   | 9   | 11  | 14  | 18  | 14  | 18  | 23  | 28  | 35  |
| BK-HGV150 | 72A           | 410us          |   | 2            | 2   | 3   | 4   | 5   | 3   | 4   | 5   | 6   | 8   | 6   | 8   | 10  | 13  | 16  |



备注:

- 表格中不同MCB下挂载的驱动器数量是最大的值，安装时请勿超过这个数量。
- 使用ABB品牌的S200系列微型断路器(MCB)的参数作为计算参考。
- 不同品牌和型号的微型断路器，驱动器的挂载数量会稍微差异。
- 当MCB的安装环境温度超过30°C或多个MCB并排安装时，挂载的驱动器数量会降低，需要重新进行计算。
- 电工通常考虑将B型MCB用于家用照明，将C型MCB用于商业照明。

功能

输出短路保护

- 如果LED输出短路，驱动器会进入保护状态，将AC断开1分钟以上，输出将恢复正常。

输出过载保护

- 如果接入负载超过额定功率，驱动器会进入打嗝状态，减少负载功率，恢复正常输出。

电路之间绝缘等级

| 绝缘等级 | 输入   | 输出   | 外壳   |
|------|------|------|------|
| 输入   | -    | 双重绝缘 | 基本绝缘 |
| 输出   | 双重绝缘 | -    | 基本绝缘 |
| 外壳   | 基本绝缘 | 基本绝缘 | -    |

产品主标签

BK-HGV022

**INPUT** **BOKE** Constant Voltage LED Driver  
For LED modules use only  
www.bokedriver.com  
MODEL: BK-HGV022-12V0  
Address: 2nd and 3rd Floor, No.51, Xihuan 5th Road, South District, 528455 Zhongshan City, Guangdong, CHINA  
MADE IN CHINA

INPUT: 200-240V~ 0.3A Max. 50/60Hz  
λ: 0.5C  
OUTPUT: 12V= 1.8A 21.6W Max.

•tc  
tc:90°C  
ta:60°C

**OUTPUT**  
V-  
V+  
V+V+

**INPUT** **BOKE** Constant Voltage LED Driver  
For LED modules use only  
www.bokedriver.com  
MODEL: BK-HGV022-24V0  
Address: 2nd and 3rd Floor, No.51, Xihuan 5th Road, South District, 528455 Zhongshan City, Guangdong, CHINA  
MADE IN CHINA

INPUT: 200-240V~ 0.3A Max. 50/60Hz  
λ: 0.5C  
OUTPUT: 24V= 0.9A 21.6W Max.

•tc  
tc:90°C  
ta:60°C

**OUTPUT**  
V-  
V+  
V+V+

产品主标签

BK-HGV048

|  |  |  |                             |                                  |                                       |
|--|--|--|-----------------------------|----------------------------------|---------------------------------------|
| <b>INPUT</b><br>ACL<br>ACN<br>NC<br>PBI wire prep. 0.75-1.5mm <sup>2</sup> | <br>www.bokedriver.com<br>BOKE Drivers Co., Ltd.<br>Address: 2nd and 3rd Floor, No.51, Xihuan 5th Road, South District, 528455 Zhongshan City, Guangdong, CHINA<br>MADE IN CHINA | <b>Constant Voltage LED Driver</b><br>For LED modules use only<br><b>MODEL: BK-HGV048-12V0</b><br>INPUT: 200-240V ~ 0.4A Max. 50/60Hz λ: 0.95<br>OUTPUT: 12V = 4A 48W Max.<br>INPUT: 100-240V ~ 0.6A Max. 50/60Hz λ: 0.95<br>OUTPUT: 12V = 3A 36W Max. | •tc<br>tc: 90°C<br>ta: 50°C | <br>SELV<br>FLICKER FREE<br>RoHS | <b>OUTPUT</b><br>V-<br>V-<br>V+<br>V+ |
|  |  | SEC wire prep. 0.75-2.5mm <sup>2</sup>   |                             |                                  |                                       |

|  |  |  |                             |                                  |                                       |
|--|--|--|-----------------------------|----------------------------------|---------------------------------------|
| <b>INPUT</b><br>ACL<br>ACN<br>NC<br>PBI wire prep. 0.75-1.5mm <sup>2</sup> | <br>www.bokedriver.com<br>BOKE Drivers Co., Ltd.<br>Address: 2nd and 3rd Floor, No.51, Xihuan 5th Road, South District, 528455 Zhongshan City, Guangdong, CHINA<br>MADE IN CHINA | <b>Constant Voltage LED Driver</b><br>For LED modules use only<br><b>MODEL: BK-HGV048-24V0</b><br>INPUT: 200-240V ~ 0.4A Max. 50/60Hz λ: 0.95<br>OUTPUT: 24V = 2A 48W Max.<br>INPUT: 100-240V ~ 0.6A Max. 50/60Hz λ: 0.95<br>OUTPUT: 24V = 1.5A 36W Max. | •tc<br>tc: 90°C<br>ta: 50°C | <br>SELV<br>FLICKER FREE<br>RoHS | <b>OUTPUT</b><br>V-<br>V-<br>V+<br>V+ |
|  |  | SEC wire prep. 0.75-2.5mm <sup>2</sup>   |                             |                                  |                                       |

|  |  |   |                             |                                  |                                       |
|--|--|---|-----------------------------|----------------------------------|---------------------------------------|
| <b>INPUT</b><br>ACL<br>ACN<br>NC<br>PBI wire prep. 0.75-1.5mm <sup>2</sup> | <br>www.bokedriver.com<br>BOKE Drivers Co., Ltd.<br>Address: 2nd and 3rd Floor, No.51, Xihuan 5th Road, South District, 528455 Zhongshan City, Guangdong, CHINA<br>MADE IN CHINA | <b>Constant Voltage LED Driver</b><br>For LED modules use only<br><b>MODEL: BK-HGV048-48V0</b><br>INPUT: 200-240V ~ 0.4A Max. 50/60Hz λ: 0.95<br>OUTPUT: 48V = 1A 48W Max.<br>MADE IN CHINA | •tc<br>tc: 90°C<br>ta: 55°C | <br>SELV<br>FLICKER FREE<br>RoHS | <b>OUTPUT</b><br>V-<br>V-<br>V+<br>V+ |
|  |  | SEC wire prep. 0.75-2.5mm <sup>2</sup>  |                             |                                  |                                       |

BK-HGV060

|  |  |  |                             |                                  |                                       |
|--|--|--|-----------------------------|----------------------------------|---------------------------------------|
| <b>INPUT</b><br>ACL<br>ACN<br>NC<br>PBI wire prep. 0.75-1.5mm <sup>2</sup> | <br>www.bokedriver.com<br>BOKE Drivers Co., Ltd.<br>Address: 2nd and 3rd Floor, No.51, Xihuan 5th Road, South District, 528455 Zhongshan City, Guangdong, CHINA<br>MADE IN CHINA | <b>Constant Voltage LED Driver</b><br>For LED modules use only<br><b>MODEL: BK-HGV060-12V0</b><br>INPUT: 200-240V ~ 0.45A Max. 50/60Hz λ: 0.95<br>OUTPUT: 12V = 5A 60W Max.<br>INPUT: 100-240V ~ 0.74A Max. 50/60Hz λ: 0.95<br>OUTPUT: 12V = 4A 48W Max. | •tc<br>tc: 90°C<br>ta: 50°C | <br>SELV<br>FLICKER FREE<br>RoHS | <b>OUTPUT</b><br>V-<br>V-<br>V+<br>V+ |
|  |  | SEC wire prep. 0.75-2.5mm <sup>2</sup>   |                             |                                  |                                       |

|  |  |  |                             |                                  |                                       |
|--|--|--|-----------------------------|----------------------------------|---------------------------------------|
| <b>INPUT</b><br>ACL<br>ACN<br>NC<br>PBI wire prep. 0.75-1.5mm <sup>2</sup> | <br>www.bokedriver.com<br>BOKE Drivers Co., Ltd.<br>Address: 2nd and 3rd Floor, No.51, Xihuan 5th Road, South District, 528455 Zhongshan City, Guangdong, CHINA<br>MADE IN CHINA | <b>Constant Voltage LED Driver</b><br>For LED modules use only<br><b>MODEL: BK-HGV060-24V0</b><br>INPUT: 200-240V ~ 0.45A Max. 50/60Hz λ: 0.95<br>OUTPUT: 24V = 2.5A 60W Max.<br>INPUT: 100-240V ~ 0.74A Max. 50/60Hz λ: 0.95<br>OUTPUT: 24V = 2A 48W Max. | •tc<br>tc: 90°C<br>ta: 50°C | <br>SELV<br>FLICKER FREE<br>RoHS | <b>OUTPUT</b><br>V-<br>V-<br>V+<br>V+ |
|  |  | SEC wire prep. 0.75-2.5mm <sup>2</sup>   |                             |                                  |                                       |

BK-HGV070

|  |  |  |                             |                                  |                                       |
|--|--|--|-----------------------------|----------------------------------|---------------------------------------|
| <b>INPUT</b><br>ACL<br>ACN<br>NC<br>PBI wire prep. 0.75-1.5mm <sup>2</sup> | <br>www.bokedriver.com<br>BOKE Drivers Co., Ltd.<br>Address: 2nd and 3rd Floor, No.51, Xihuan 5th Road, South District, 528455 Zhongshan City, Guangdong, CHINA<br>MADE IN CHINA | <b>Constant Voltage LED Driver</b><br>For LED modules use only<br><b>MODEL: BK-HGV070-48V0</b><br>INPUT: 200-240V ~ 0.5A Max. 50/60Hz λ: 0.95<br>OUTPUT: 48V = 1.5A 72W Max. | •tc<br>tc: 90°C<br>ta: 50°C | <br>SELV<br>FLICKER FREE<br>RoHS | <b>OUTPUT</b><br>V-<br>V-<br>V+<br>V+ |
|  |  | SEC wire prep. 0.75-2.5mm <sup>2</sup>   |                             |                                  |                                       |

BK-HGV072

|  |  |   |                             |                                  |                                       |
|--|--|---|-----------------------------|----------------------------------|---------------------------------------|
| <b>INPUT</b><br>ACL<br>ACN<br>NC<br>PBI wire prep. 0.75-1.5mm <sup>2</sup> | <br>www.bokedriver.com<br>BOKE Drivers Co., Ltd.<br>Address: 2nd and 3rd Floor, No.51, Xihuan 5th Road, South District, 528455 Zhongshan City, Guangdong, CHINA<br>MADE IN CHINA | <b>Constant Voltage LED Driver</b><br>For LED modules use only<br><b>MODEL: BK-HGV072-12V0</b><br>INPUT: 200-240V ~ 0.5A Max. 50/60Hz λ: 0.95<br>OUTPUT: 12V = 6A 72W Max.<br>INPUT: 100-240V ~ 0.75A Max. 50/60Hz λ: 0.95<br>OUTPUT: 12V = 5A 60W Max. | •tc<br>tc: 90°C<br>ta: 50°C | <br>SELV<br>FLICKER FREE<br>RoHS | <b>OUTPUT</b><br>V-<br>V-<br>V+<br>V+ |
|  |  | SEC wire prep. 0.75-2.5mm <sup>2</sup>  |                             |                                  |                                       |

|  |  |   |                             |                                  |                                       |
|--|--|---|-----------------------------|----------------------------------|---------------------------------------|
| <b>INPUT</b><br>ACL<br>ACN<br>NC<br>PBI wire prep. 0.75-1.5mm <sup>2</sup> | <br>www.bokedriver.com<br>BOKE Drivers Co., Ltd.<br>Address: 2nd and 3rd Floor, No.51, Xihuan 5th Road, South District, 528455 Zhongshan City, Guangdong, CHINA<br>MADE IN CHINA | <b>Constant Voltage LED Driver</b><br>For LED modules use only<br><b>MODEL: BK-HGV072-24V0</b><br>INPUT: 200-240V ~ 0.5A Max. 50/60Hz λ: 0.95<br>OUTPUT: 24V = 3A 72W Max.<br>INPUT: 100-240V ~ 0.75A Max. 50/60Hz λ: 0.95<br>OUTPUT: 24V = 2.5A 60W Max. | •tc<br>tc: 90°C<br>ta: 50°C | <br>SELV<br>FLICKER FREE<br>RoHS | <b>OUTPUT</b><br>V-<br>V-<br>V+<br>V+ |
|  |  | SEC wire prep. 0.75-2.5mm <sup>2</sup>  |                             |                                  |                                       |

BK-HGV100

|  |  |  |                             |                                  |                                       |
|--|--|--|-----------------------------|----------------------------------|---------------------------------------|
| <b>INPUT</b><br>ACL<br>ACN<br>NC<br>PBI wire prep. 0.75-1.5mm <sup>2</sup> | <br>www.bokedriver.com<br>BOKE Drivers Co., Ltd.<br>Address: 2nd and 3rd Floor, No.51, Xihuan 5th Road, South District, 528455 Zhongshan City, Guangdong, CHINA<br>MADE IN CHINA | <b>Constant Voltage LED Driver</b><br>For LED modules use only<br><b>MODEL: BK-HGV100-24V0</b><br>INPUT: 200-240V ~ 0.8A Max. 50/60Hz λ: 0.95<br>OUTPUT: 24V = 4A 96W Max. | •tc<br>tc: 90°C<br>ta: 50°C | <br>SELV<br>FLICKER FREE<br>RoHS | <b>OUTPUT</b><br>V-<br>V-<br>V+<br>V+ |
|  |  | SEC wire prep. 1.5-2.0mm <sup>2</sup>  |                             |                                  |                                       |

|  |  |  |                             |                                  |                                       |
|--|--|--|-----------------------------|----------------------------------|---------------------------------------|
| <b>INPUT</b><br>ACL<br>ACN<br>NC<br>PBI wire prep. 0.75-1.5mm <sup>2</sup> | <br>www.bokedriver.com<br>BOKE Drivers Co., Ltd.<br>Address: 2nd and 3rd Floor, No.51, Xihuan 5th Road, South District, 528455 Zhongshan City, Guangdong, CHINA<br>MADE IN CHINA | <b>Constant Voltage LED Driver</b><br>For LED modules use only<br><b>MODEL: BK-HGV100-48V0</b><br>INPUT: 200-240V ~ 0.8A Max. 50/60Hz λ: 0.95<br>OUTPUT: 48V = 2A 96W Max. | •tc<br>tc: 90°C<br>ta: 50°C | <br>SELV<br>FLICKER FREE<br>RoHS | <b>OUTPUT</b><br>V-<br>V-<br>V+<br>V+ |
|  |  | SEC wire prep. 1.5-2.0mm <sup>2</sup>  |                             |                                  |                                       |

|  |  |  |                             |                                  |  |
|--|--|--|-----------------------------|----------------------------------|--|
| <b>INPUT</b><br>ACL<br>ACN<br>NC<br>PBI wire prep. 0.75-1.5mm <sup>2</sup> | <br>www.bokedriver.com<br>BOKE Drivers Co., Ltd.<br>Address: 2nd and 3rd Floor, No.51, Xihuan 5th Road, South District, 528455 Zhongshan City, Guangdong, CHINA<br>MADE IN CHINA | <b>Constant Voltage LED Driver</b><br>For LED modules use only<br><b>MODEL: BK-HGV100-24V0</b><br>INPUT: 200-240V ~ 0.8A Max. 50/60Hz λ: 0.95<br>OUTPUT: 24V = 4A 96W Max. | •tc<br>tc: 90°C<br>ta: 50°C | <br>SELV<br>FLICKER FREE<br>RoHS | <b>輸出</b><br>接線規格 1.5-2.5mm <sup>2</sup><br>V-<br>V+ |
|  |  | SEC wire prep. 1.5-2.5mm <sup>2</sup>  |                             |                                  |  |

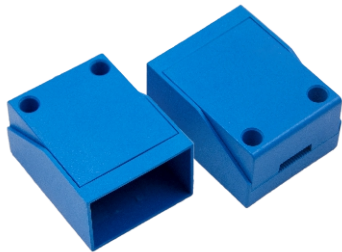
|  |  |  |                             |                                  |  |
|--|--|--|-----------------------------|----------------------------------|--|
| <b>INPUT</b><br>ACL<br>ACN<br>NC<br>PBI wire prep. 0.75-1.5mm <sup>2</sup> | <br>www.bokedriver.com<br>BOKE Drivers Co., Ltd.<br>Address: 2nd and 3rd Floor, No.51, Xihuan 5th Road, South District, 528455 Zhongshan City, Guangdong, CHINA<br>MADE IN CHINA | <b>Constant Voltage LED Driver</b><br>For LED modules use only<br><b>MODEL: BK-HGV100-48V0</b><br>INPUT: 200-240V ~ 0.8A Max. 50/60Hz λ: 0.95<br>OUTPUT: 48V = 2A 96W Max. | •tc<br>tc: 90°C<br>ta: 50°C | <br>SELV<br>FLICKER FREE<br>RoHS | <b>輸出</b><br>接線規格 1.5-2.5mm <sup>2</sup><br>V-<br>V+ |
|  |  | SEC wire prep. 1.5-2.5mm <sup>2</sup>  |                             |                                  |  |

产品主标签

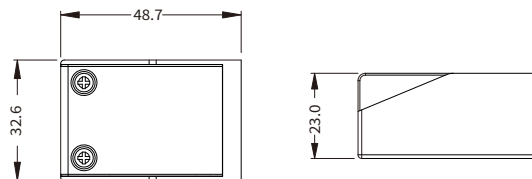
BK-HGV150

|  |   |   |  |   |
|--|---|---|--|---|
| <p><b>INPUT</b></p> <p>ACL<br/>ACN<br/>NC</p> <p>PBI wire prep.<br/>0.75-1.5mm<sup>2</sup></p> | <p><b>BOKE</b><br/>www.bokedriver.com</p> <p>BOKE Drivers Co.,Ltd.</p> <p>Address:2nd and 3rd Floor, No.51,<br/>Xihuan 5th Road, South District,<br/>528455 Zhongshan City, Guangdong, CHINA</p> <p>MADE IN CHINA</p> | <p><b>Constant Voltage LED Driver</b><br/>For LED modules use only</p> <p><b>MODEL: BK-HGV150-24V0</b></p> <p>INPUT: 200-240V ~ 1A Max. 50/60Hz<br/>λ :0.95</p> <p>OUTPUT: 24V = 6A 144W Max.</p> |  | <p><b>OUTPUT</b></p> <p>SEC wire prep.<br/>1.5-2.0mm<sup>2</sup></p> <p>V-<br/>V-<br/>V+<br/>V+</p> |
| <p><b>INPUT</b></p> <p>ACL<br/>ACN<br/>NC</p> <p>PBI wire prep.<br/>0.75-1.5mm<sup>2</sup></p> | <p><b>BOKE</b><br/>www.bokedriver.com</p> <p>BOKE Drivers Co.,Ltd.</p> <p>Address:2nd and 3rd Floor, No.51,<br/>Xihuan 5th Road, South District,<br/>528455 Zhongshan City, Guangdong, CHINA</p> <p>MADE IN CHINA</p> | <p><b>Constant Voltage LED Driver</b><br/>For LED modules use only</p> <p><b>MODEL: BK-HGV150-48V0</b></p> <p>INPUT: 200-240V ~ 1A Max. 50/60Hz<br/>λ :0.95</p> <p>OUTPUT: 48V = 3A 144W Max.</p> |  | <p><b>OUTPUT</b></p> <p>SEC wire prep.<br/>1.5-2.0mm<sup>2</sup></p> <p>V-<br/>V-<br/>V+<br/>V+</p> |
| <p><b>INPUT</b></p> <p>ACL<br/>ACN<br/>NC</p> <p>PBI wire prep.<br/>0.75-1.5mm<sup>2</sup></p> | <p><b>BOKE</b><br/>www.bokedriver.com</p> <p>BOKE Drivers Co.,Ltd.</p> <p>Address:2nd and 3rd Floor, No.51,<br/>Xihuan 5th Road, South District,<br/>528455 Zhongshan City, Guangdong, CHINA</p> <p>MADE IN CHINA</p> | <p><b>Constant Voltage LED Driver</b><br/>For LED modules use only</p> <p><b>MODEL: BK-HGV150-24V0</b></p> <p>INPUT: 200-240V ~ 1A Max. 50/60Hz<br/>λ :0.95</p> <p>OUTPUT: 24V = 6A 144W Max.</p> |  | <p><b>OUTPUT</b></p> <p>SEC wire prep.<br/>1.5-2.5mm<sup>2</sup></p> <p>V-<br/>V+</p>               |
| <p><b>INPUT</b></p> <p>ACL<br/>ACN<br/>NC</p> <p>PBI wire prep.<br/>0.75-1.5mm<sup>2</sup></p> | <p><b>BOKE</b><br/>www.bokedriver.com</p> <p>BOKE Drivers Co.,Ltd.</p> <p>Address:2nd and 3rd Floor, No.51,<br/>Xihuan 5th Road, South District,<br/>528455 Zhongshan City, Guangdong, CHINA</p> <p>MADE IN CHINA</p> | <p><b>Constant Voltage LED Driver</b><br/>For LED modules use only</p> <p><b>MODEL: BK-HGV150-48V0</b></p> <p>INPUT: 200-240V ~ 1A Max. 50/60Hz<br/>λ :0.95</p> <p>OUTPUT: 48V = 3A 144W Max.</p> |  | <p><b>OUTPUT</b></p> <p>SEC wire prep.<br/>1.5-2.5mm<sup>2</sup></p> <p>V-<br/>V+</p>               |

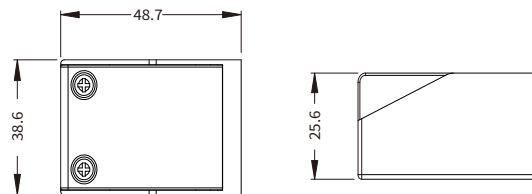
可选配件



(型号BK-BAS003A)



(型号BK-BAS003B)



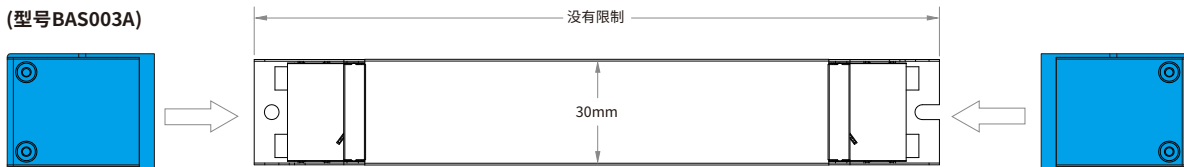
备注: BAS003A适用于HGV022/HGV048/HGV060/HGV072/HGV070/HGV100

BAS003B适用于HGV150

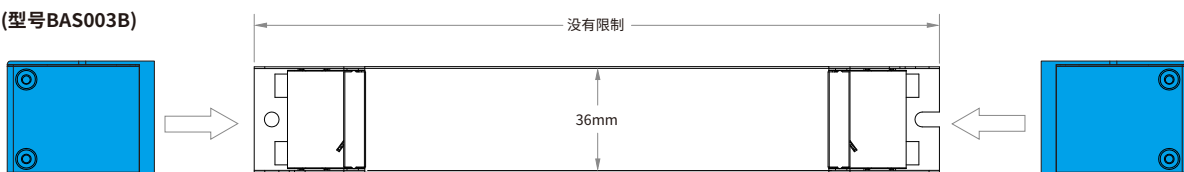
单位:mm

配件使用示意图

(型号BAS003A)



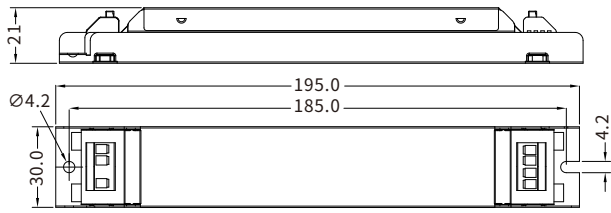
(型号BAS003B)



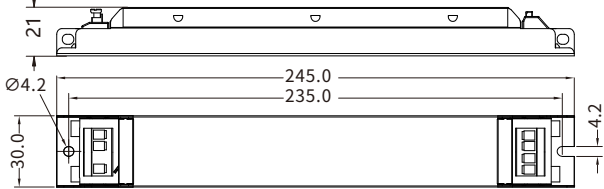
**结构尺寸 (不带配件)**

单位:mm

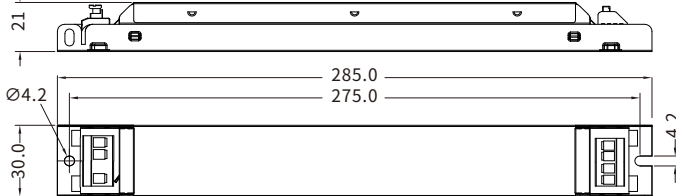
HGV022



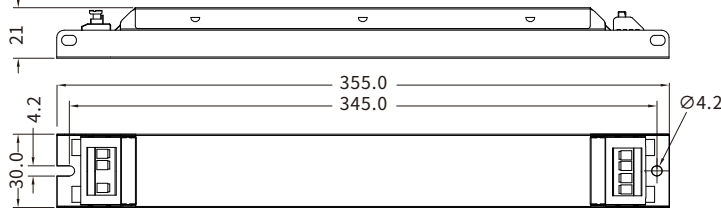
HGV048



HGV060



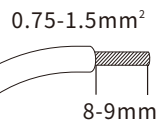
HGV070/HGV072



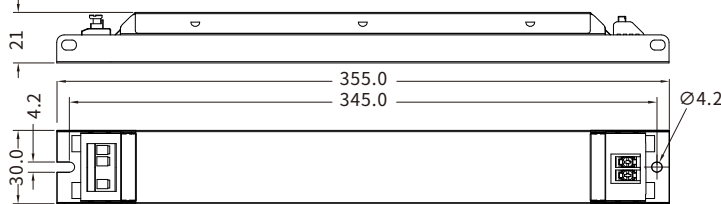
输入端口

| 编号 | 功能定义 | 颜色 |
|----|------|----|
| 1  | ACL  | 橙色 |
| 2  | ACN  | 橙色 |
| 3  | NG   | 灰色 |
| 4  | FG   | 灰色 |

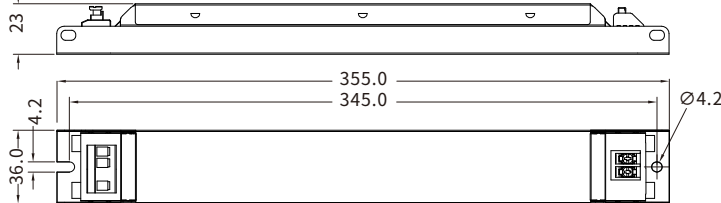
输入线材



HGV100



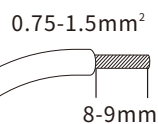
HGV150



输入端口

| 编号 | 功能定义 | 颜色 |
|----|------|----|
| 1  | ACL  | 橙色 |
| 2  | ACN  | 橙色 |
| 3  | NG   | 灰色 |
| 4  | FG   | 灰色 |

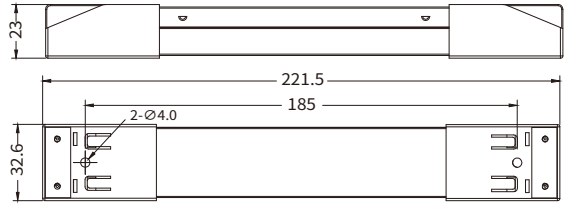
输入线材



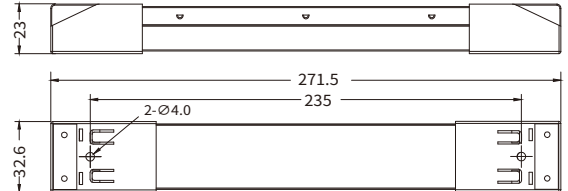
**结构尺寸 (带配件)**

单位:mm

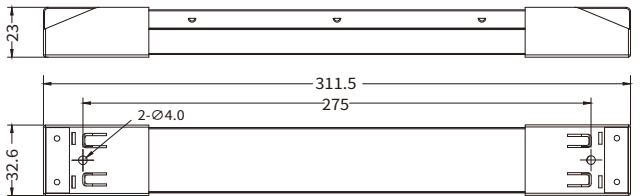
HGV022



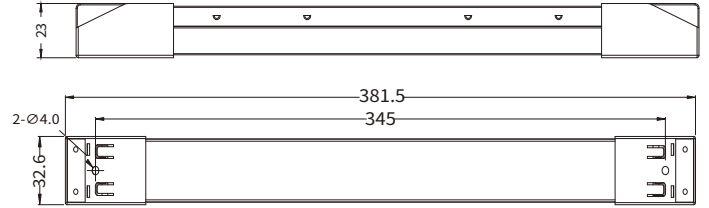
HGV048



HGV060



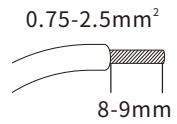
HGV070/HGV072



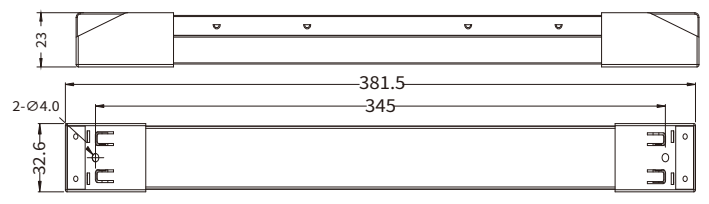
输出端口

| 编号 | 功能定义 | 颜色 |
|----|------|----|
| 1  | V-   | 黑色 |
| 2  | V-   | 黑色 |
| 3  | V+   | 红色 |
| 4  | V+   | 红色 |

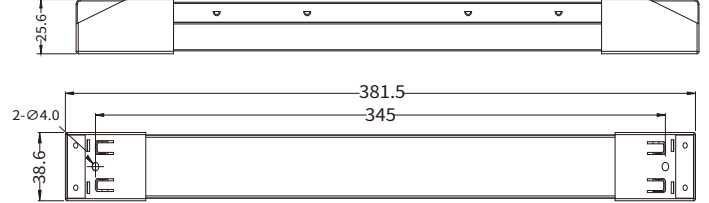
输出线材



HGV100



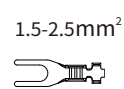
HGV150



输出端口

| 编号 | 功能定义 |
|----|------|
| 1  | V-   |
| 2  | V+   |

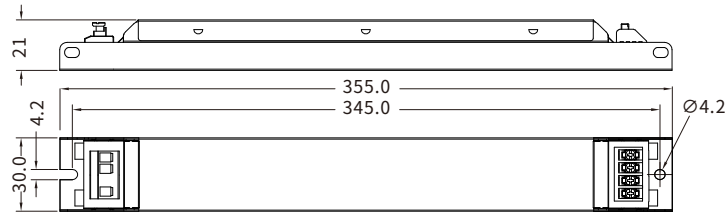
输出线材



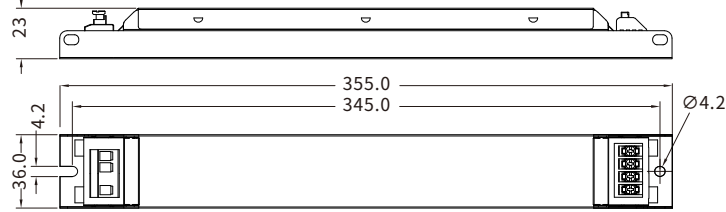
**结构尺寸 (不带配件)**

单位:mm

HGV100



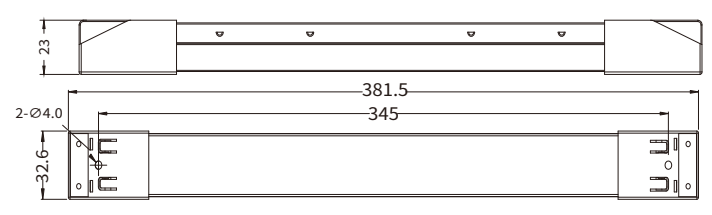
HGV150



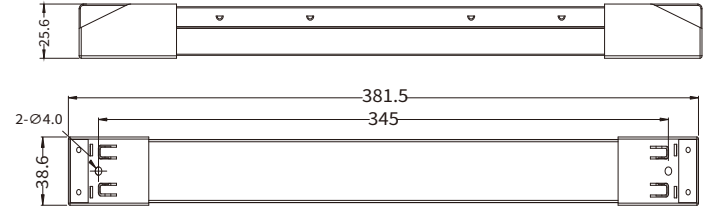
**结构尺寸 (带配件)**

单位:mm

HGV100



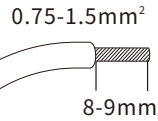
HGV150



**输入端口**

| 编号 | 功能定义 | 颜色 |
|----|------|----|
| 1  | ACL  | 橙色 |
| 2  | ACN  | 橙色 |
| 3  | NG   | 灰色 |
| 4  | FG   | 灰色 |

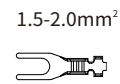
**输入线材**



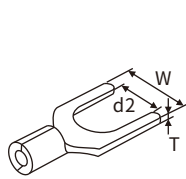
**输出端口**

| 编号 | 功能定义 |
|----|------|
| 1  | V-   |
| 2  | V-   |
| 3  | V+   |
| 4  | V+   |

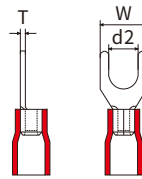
**输出线材**



**冷压端子参考**



冷压端子(裸端头)



冷压端子(绝缘端头)

| 产品型号                      | 位置 | 接线直径                   | 冷压端子   |        |       |       |       |       |
|---------------------------|----|------------------------|--|--------|-------|-------|-------|-------|
|                           |    |                        | 型号参考   | 尺寸     |       |       |       |       |
|                           |    |                        |  | 内径(d2) | 外径(W) | 厚度(T) |       |       |
| HGV100(4PIN)/HGV150(4PIN) | 输出 | 0.2-0.5mm <sup>2</sup> | RNB0.5-3.2                                   | 3.2mm  | 5mm   | 0.5mm |       |       |
| HGV100(2PIN)              |    | 0.5-1.5mm <sup>2</sup> | SNB1.25-3.2/SV1.25-3                         |        |       |       | 5.7mm | 0.7mm |
|                           |    | 1.5-2.5mm <sup>2</sup> | SNB2-3.2/SV2-3                               |        |       |       |       | 0.8mm |
| HGV150(2PIN)              | 输出 | 0.5-1.5mm <sup>2</sup> | SNB1.25-4S/SV1.25-4S<br>SNV1.25-4M/SV1.25-4M | 4.3mm  | 6.4mm | 0.7mm |       |       |
|                           |    | 1.5-2.5mm <sup>2</sup> | SNB2-4S/SV2-4S                               |        | 7.2mm |       |       |       |
|                           |    |                        | SNV2-4M/SV2-4M                               |        | 6.4mm | 0.8mm |       |       |
| 7.2mm                     |    |                        |  |        |       |       |       |       |

**安装注意事项**

**热拔插**

- 由于残余输出电压 > 0V, 因此不支持热插拔。

**布线指导**

- 所有连接必须保持尽可能短, 以确保良好的EMI行为。
- 电源线应与LED驱动器及其他引线分开放置(理想情况下5 - 10厘米的距离)。
- 最大输出线长度为2米。
- 不正确的布线会损坏LED模块。

**安装螺丝规格和扭矩**

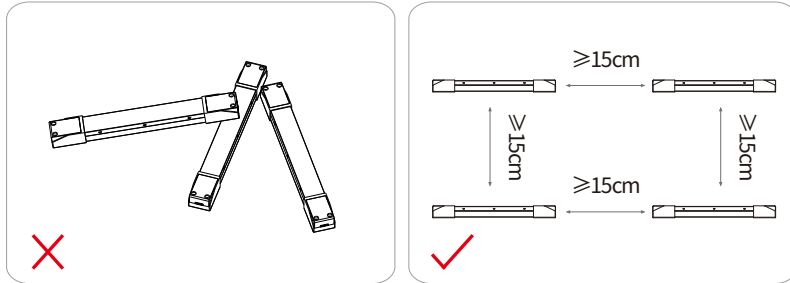
- 锁螺钉的最大扭矩: 0.5 Nm/M4

**更换LED灯模组**

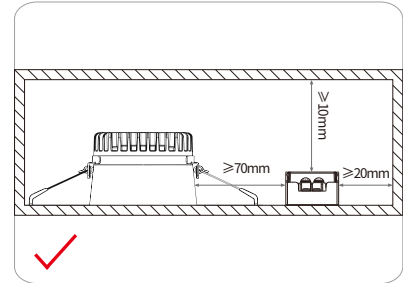
1. 关闭230V输入
2. 移除LED灯模组
3. 等待5s
4. 连接新的LED模块

**安装要求**

- 驱动器应安装在干燥，无酸，无油，无脂的环境中。
- 驱动器应安装环境温度在任何时候都不能超过Ta的值。
- 驱动器安装表面温度应低于40°C。
- 驱动器离发热体(如灯具散热器)应该保持一定的距离。
- 如果驱动器外置使用(需要配合堵头配件使用)，那么驱动器的安装还应符合如下条件:
  1. 驱动器间应该保持一定的距离，如图1。
  2. 驱动器离和周边的物体保持一定的距离，如图2。
  3. 不支持两个电源输出并联使用。



图一

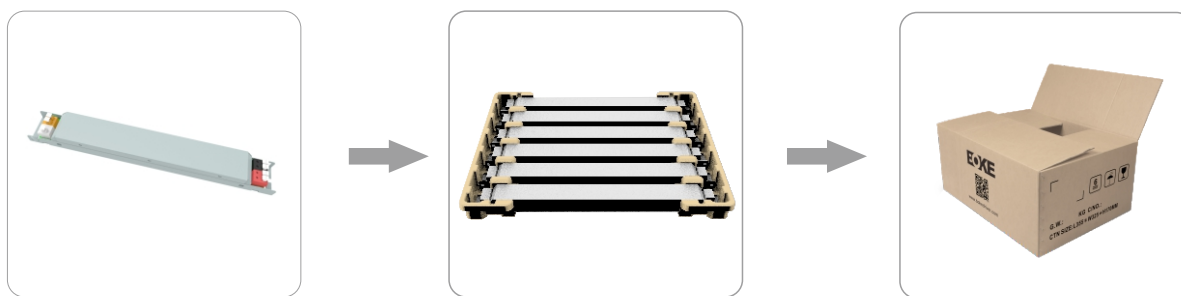


图二



产品包装(可选)

方式1: 出厂默认



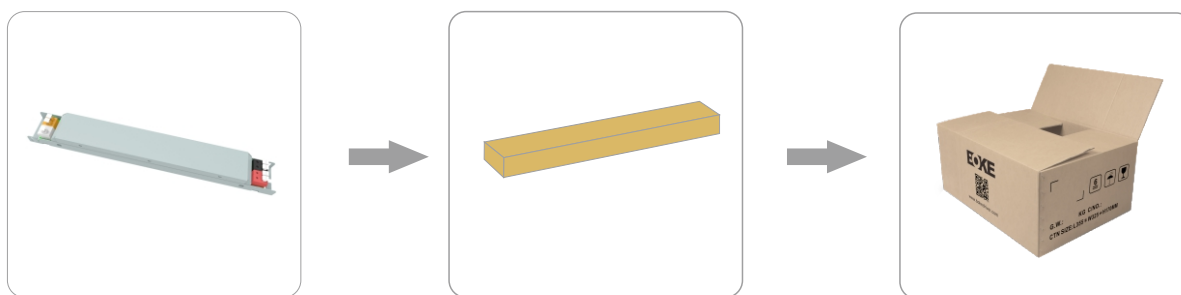
产品

纸托

7台\*6层=42台/箱  
7台\*5层=35台/箱  
7台\*4层=28台/箱  
6台\*4层=24台/箱

| 型号     | 产品尺寸           | 重量/台 | 纸托尺寸           | 外箱尺寸             | 包装/箱 | 净量/箱   | 毛量/箱   |
|--------|----------------|------|----------------|------------------|------|--------|--------|
| HGV022 | L195*W30*H21mm | 130g | L340*W75*H29mm | L355*W235*H205mm | 42台  | 5.46KG | 6.86KG |
| HGV048 | L245*W30*H21mm | 181g | L340*W75*H29mm | L355*W285*H205mm | 42台  | 7.60KG | 8.90KG |
| HGV060 | L285*W30*H21mm | 220g | L340*W75*H29mm | L355*W325*H170mm | 35台  | 7.70KG | 8.90KG |
| HGV070 | L355*W30*H21mm | 383g | L340*W75*H29mm | L395*W355*H140mm | 28台  | 10.7KG | 11.9KG |
| HGV072 | L355*W30*H21mm | 303g | L340*W75*H29mm | L395*W355*H140mm | 28台  | 8.48KG | 9.68KG |
| HGV100 | L355*W30*H21mm | 293g | L340*W75*H29mm | L395*W355*H140mm | 28台  | 8.21KG | 9.41KG |
| HGV150 | L355*W36*H23mm | 414g | L340*W75*H33mm | L395*W355*H160mm | 24台  | 9.94KG | 11.2KG |

方式2:



产品

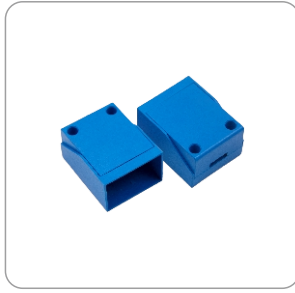
内盒

12台\*4层=48台/箱  
8台\*5层=40台/箱  
7台\*5层=35台/箱  
9台\*3层=27台/箱  
4台\*4层=16台/箱

| 型号     | 产品尺寸           | 重量/台 | 内盒尺寸           | 外箱尺寸             | 包装/箱 | 净量/箱   | 毛量/箱   |
|--------|----------------|------|----------------|------------------|------|--------|--------|
| HGV022 | L195*W30*H21mm | 130g | L230*W40*H30mm | L280*W300*H180mm | 48台  | 6.24KG | 7.80KG |
| HGV048 | L245*W30*H21mm | 181g | L280*W40*H30mm | L345*W300*H175mm | 40台  | 7.24KG | 8.74KG |
| HGV060 | L285*W30*H21mm | 220g | L320*W40*H30mm | L345*W300*H175mm | 35台  | 7.70KG | 9.30KG |
| HGV070 | L355*W30*H21mm | 383g | L390*W40*H30mm | L410*W285*H155mm | 27台  | 10.3KG | 11.9KG |
| HGV072 | L355*W30*H21mm | 303g | L390*W40*H30mm | L410*W285*H155mm | 27台  | 8.18KG | 9.78KG |
| HGV100 | L355*W30*H21mm | 293g | L390*W40*H30mm | L410*W285*H155mm | 27台  | 7.91KG | 9.51KG |
| HGV150 | L355*W36*H23mm | 414g | L390*W43*H30mm | L410*W285*H155mm | 27台  | 11.2KG | 12.7KG |

产品包装

可选配件



端盖+螺丝



100套/箱

| 型号      | 配件尺寸                | 重量/套 | 外箱尺寸             | 包装/箱 | 净量/箱  | 毛量/箱  |
|---------|---------------------|------|------------------|------|-------|-------|
| BAS003A | L48.7*W32.6*H23mm   | 22g  | L450*W350*H180mm | 100套 | 2.2kg | 2.7kg |
| BAS003B | L48.7*W38.6*H25.6mm | 27g  | L450*W350*H180mm | 100套 | 2.7kg | 3.2kg |

附加信息

1. 产品使用寿命和MTBF仅供参考，并不代表为质保声明。
2. 想获取更多的信息请发送电子邮件至 [info@bokedriver.com](mailto:info@bokedriver.com)。